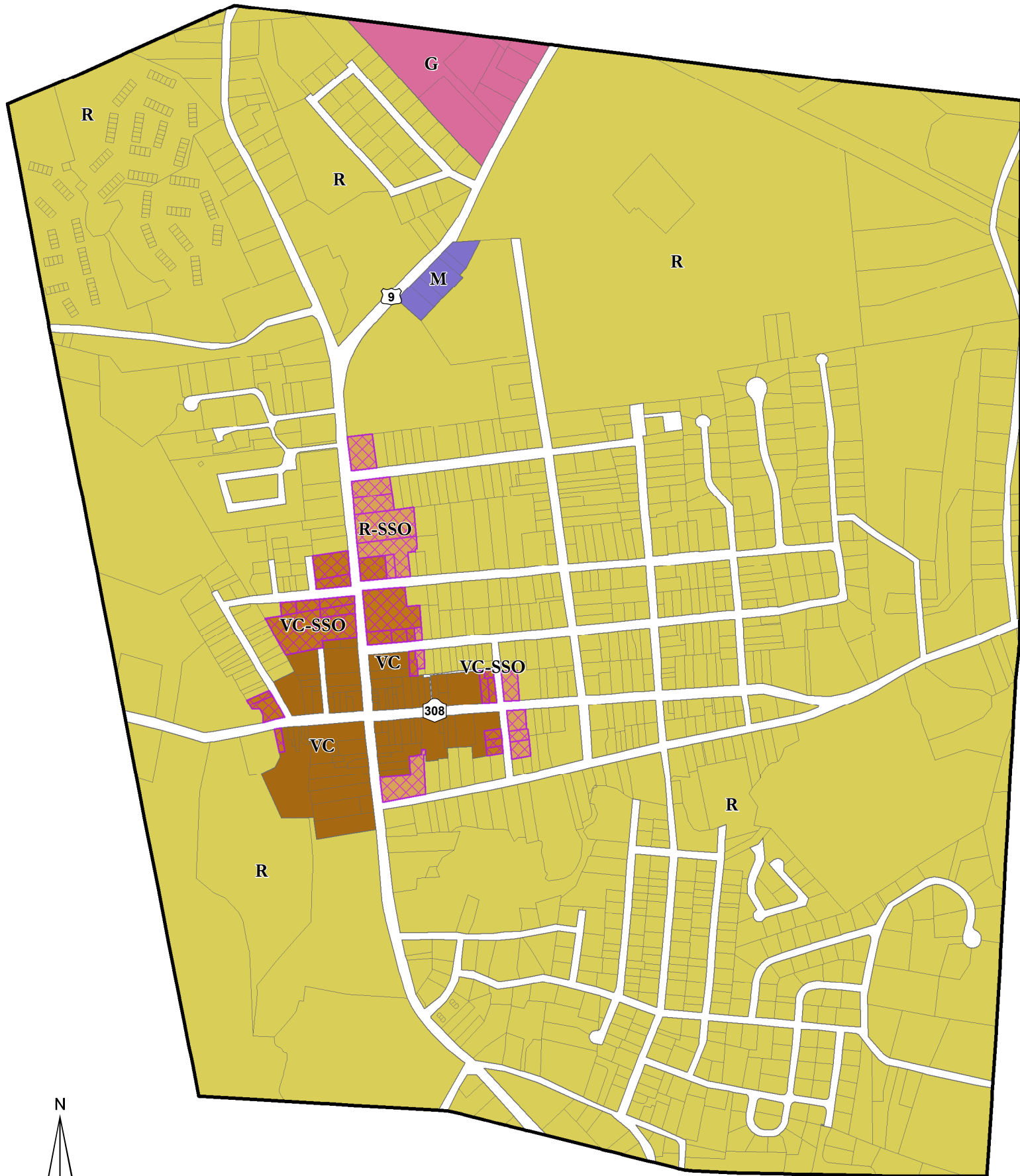
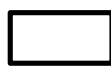










# Village of Rhinebeck Zoning Map



## Legend

-  MUNICIPAL BOUNDARIES
-  PARCEL BOUNDARIES

### Zone Districts

-  G, GATEWAY BUSINESS DISTRICT
-  M, MEDICAL OFFICE
-  R, RESIDENTIAL DISTRICT
-  R-SSO, RESIDENTIAL DISTRICT- SENSITIVITY OVERLAY
-  VC, VILLAGE CENTER DISTRICT
-  VC-SSO, VILLAGE CENTER SPECIAL SENSITIVITY OVERLAY
-  SPECIAL SENSITIVITY OVERLAY DISTRICT



Map Prepared By Dutchess County  
Department of Planning and Development  
Issued: February 2016

Zoning District boundaries are enacted by the Municipalities. These maps are based on information supplied by the Municipalities, per agreement with Dutchess County Department of Planning and Development. Zoning district lines are updated at the pleasure of the Municipality. Check with local municipal officials for most recent boundary delineations.