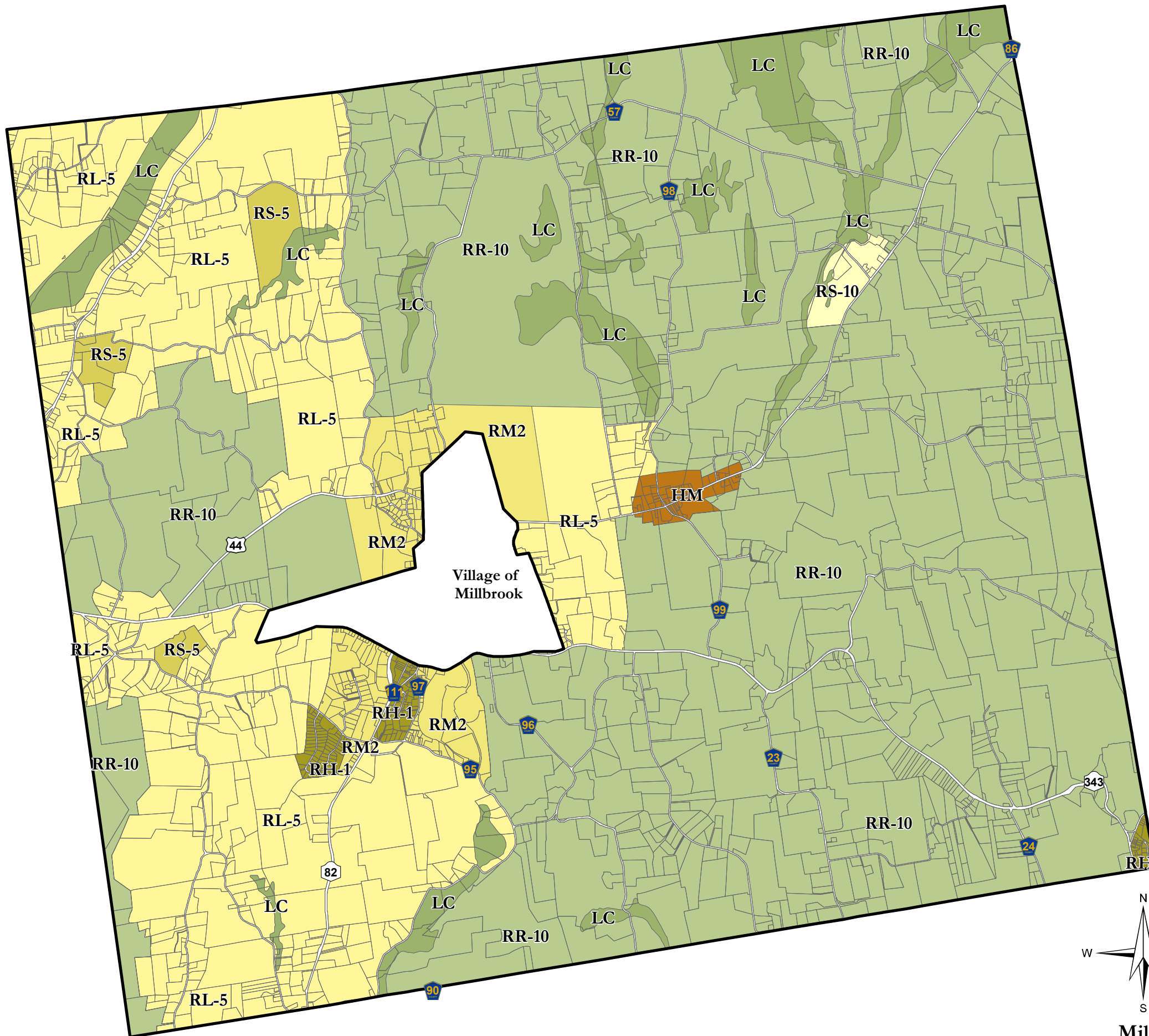


Town of Washington Zoning Map

Map Prepared By Dutchess County
Department of Planning and Development
Issued: February 2016





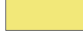

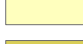

Zoning District boundaries are enacted by the Municipalities. These maps are based on information supplied by the Municipalities, per agreement with Dutchess County Department of Planning and Development. Zoning district lines are updated at the pleasure of the Municipality. Check with local municipal officials for most recent boundary delineations.



Legend

-  MUNICIPAL BOUNDARIES
-  PARCEL BOUNDARIES

Zoning Districts

-  HM, HAMLET MIXED USE
-  LC, LAND CONSERVATION
-  RH-1, HIGH DENSITY RESIDENTIAL
-  RL-5, LOW DENSITY RESIDENTIAL
-  RM2, MEDIUM DENSITY RESIDENTIAL
-  RR-10, RURAL RESIDENTIAL
-  RS-10, RURAL RESIDENTIAL
-  RS-5, LOW DENSITY RESIDENTIAL

