



## COUNTY OF DUTCHESS

DEPARTMENT OF PUBLIC WORKS  
DIVISION OF PUBLIC TRANSIT

### Dutchess County Public Transit Demand Response Services - March 2018

ADA Complementary Paratransit Service is accessible bus service for individuals traveling within ¼ of a mile from the normal route of the fixed route service whose disability prohibits access to the fixed route system. The fare is \$3.50 for a single one-way trip. The passenger's personal care attendant rides free. Passengers must apply for eligibility.

Dial-A-Ride is a municipally-sponsored, curb-to-curb service open to the public in the participating communities. It is above and beyond fixed route and ADA Complementary Paratransit service. Passengers must register to use this service.

Flex Service is a demand-response service that operates outside the ¾ mile ADA-required zones. It is above and beyond fixed route and ADA Complementary Paratransit service. This service provides curb-to-curb service in areas with little or no fixed route service for the general public with no preference given to any group. The fare for Flex service is more than typical ADA Complementary Paratransit service. Passengers must register to use this service.

#### Reservations and Cancellations can be made to (845) 473-8424, TDD/TTY: 711

Description	ADA Paratransit	Dial-A-Ride	City of Poughkeepsie Dial-A-Ride	Flex
Service Area	Within a ¼ mile radius of Dutchess County Public Transit fixed routes	Within the Towns of Hyde Park, Wappinger, Poughkeepsie, Fishkill, East Fishkill and Villages of Fishkill and Wappinger Falls	Within the City of Poughkeepsie	Within cities, towns and villages or between cities, towns and villages where there is no available fixed route service, excluding City of Poughkeepsie
Eligibility	Persons with disabilities that cannot access fixed route transit or a fixed route transit bus stop	All passengers	All passengers	All passengers
Fares	\$3.50	\$3.50 for general fare \$1.00 for seniors (60+), Veterans	\$3.50 for general fare \$7.00 same-day fare \$1.00 for seniors (60+), Veterans, Medicare, Persons with Disabilities	\$5.00 within a city, town, village \$6.00 between city, town and village
Service Hours	Same hours as a DCPT fixed route in operation at time of pick up or drop off (Mon-Sat 5:00 a.m. to 12:45 a.m., Sun 7:45 a.m. to 7:00 p.m.)	Mon-Fri 8:00 a.m. to 4:30 p.m.	Mon-Fri 8:00 a.m. to 4:30 p.m.	Mon-Fri 9:00 a.m. to 1:45 p.m.
Reservation Period	Next day to 30 days in advance	3 to 30 days in advance	Same day to 30 days in advance	3 to 30 days in advance
Application Process?	Yes with medical certification	Yes	Yes – via telephone	Yes
Funding of Service	County	City, Town or Village	City and County	County
Mode	Origin to Destination	Curb to Curb	Curb to Curb	Curb to Curb
Trip Denials	No	Yes	Yes	Yes



## COUNTY OF DUTCHESS

DEPARTMENT OF PUBLIC WORKS  
DIVISION OF PUBLIC TRANSIT

Municipality	Monday	Tuesday	Wednesday	Thursday	Friday
<b>City of Poughkeepsie</b>					
Local, South Road Malls, Adams, 44 Plaza	✓	✓	✓	✓	✓
1 Bushwick Road, Lagrange				✓	
Fishkill		✓ 2nd Tues.of the Month			
129 Clove Branch Road, East Fishkill		✓ 2nd Tues.of the Month			
<b>Town of East Fishkill</b>					
Local	✓				✓
Beacon	✓				
Fishkill	✓		✓		✓
South Rd. Malls			✓		
<b>Town of Fishkill</b>					
Local & Beacon		✓		✓	
Poughkeepsie & South Rd. Malls		✓		✓	
<b>Town of Hyde Park</b>					
Local		✓			
City & Town of Poughkeepsie		✓			
South Rd. Malls		✓			
Fishkill		✓ Last Tues.of the Month			
<b>Town of Poughkeepsie - North</b>					
Local, City & Town of Poughkeepsie	✓			✓	✓
Fishkill	✓ 1st Mon.of the Month				
<b>Town of Poughkeepsie - South</b>					
Local, City & Town of Poughkeepsie	✓		✓		✓

MARCUS J. MOLINARO  
COUNTY EXECUTIVE



ROBERT H. BALKIND, P.E.  
COMMISSIONER

## COUNTY OF DUTCHESS

DEPARTMENT OF PUBLIC WORKS  
DIVISION OF PUBLIC TRANSIT

Fishkill			✓ 1st Wed.of the Month		
<b>Town of Wappinger</b>					
Local	✓	✓	✓	✓	✓
Poughkeepsie & South Rd. Malls		✓		✓	
Fishkill	✓		✓		
Castle Point		✓			✓

**BUS ROUTES  
(AS OF MARCH 2018)**

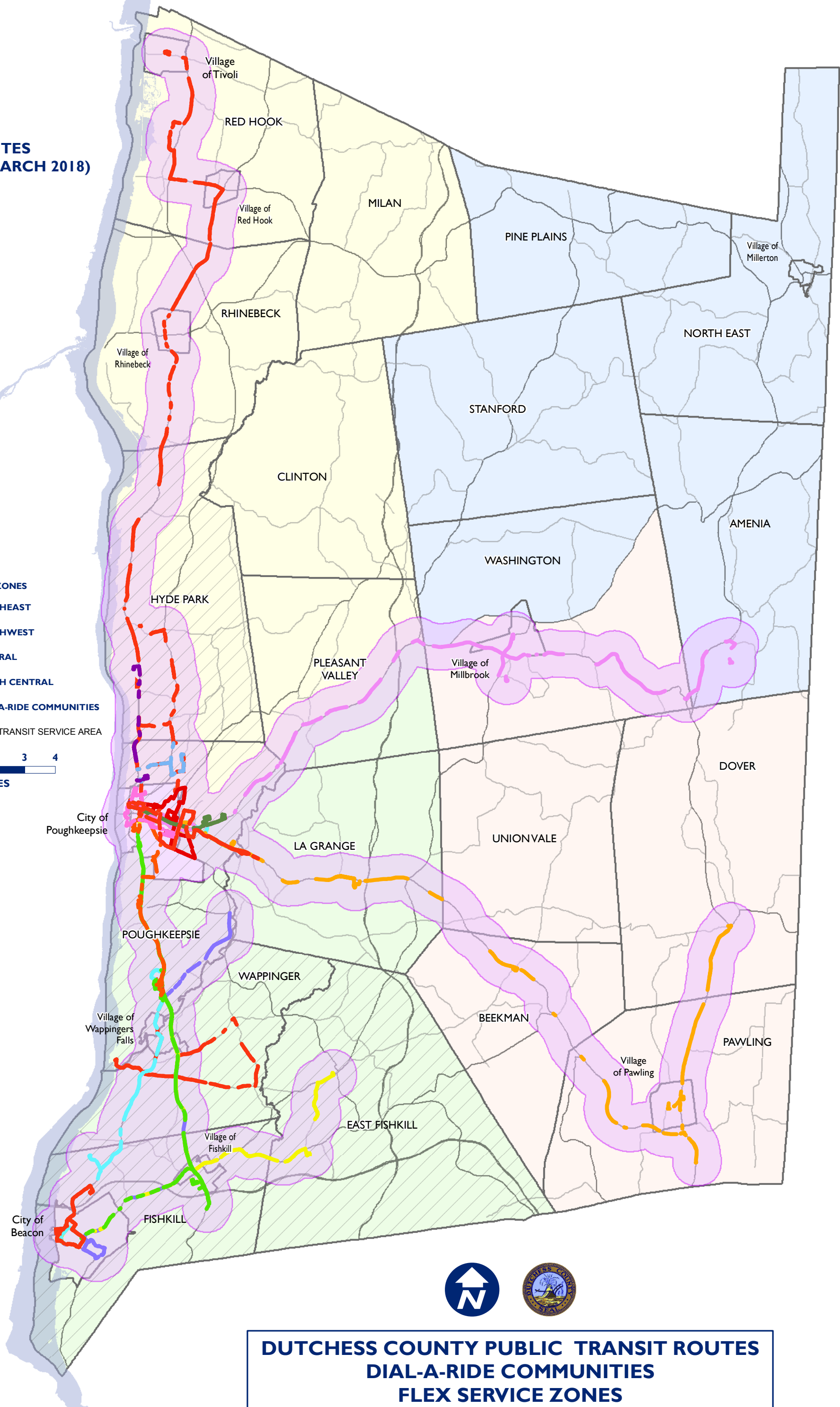
- A
- B
- C
- D
- E
- F
- G
- J
- K
- L
- M
- P
- PRL
- BRL
- NHRL

**FLEX SERVICE ZONES**

- NORTHEAST
- NORTHWEST
- CENTRAL
- SOUTH CENTRAL

**DIAL-A-RIDE COMMUNITIES**

- DIAL-A-RIDE COMMUNITIES
- PARATRANSIT SERVICE AREA



**DUTCHESS COUNTY PUBLIC TRANSIT ROUTES  
DIAL-A-RIDE COMMUNITIES  
FLEX SERVICE ZONES  
PARATRANSIT SERVICE AREA**