

# Pine Plains Town Center Pedestrian Plan and Design Study

In 2014 the Poughkeepsie-Dutchess County Transportation Council and a volunteer Task Force with Town Board representatives completed a Town Center Pedestrian Plan with three components:

- an inventory of existing sidewalk conditions;
- recommendations for priority improvements;
- specific design suggestions for the hamlet center.

The Town Center is home to a variety of commercial and civic uses, including a grocery store, restaurants, bank, pharmacy, library, central schools, and parks. All are within reasonable walking or biking distance for the half of the Town's population that live within a mile of the Center. The Plan proposed a series of steps to repair and extend the sidewalk system and provide alternative routes to prime destinations.



Early  
1900s

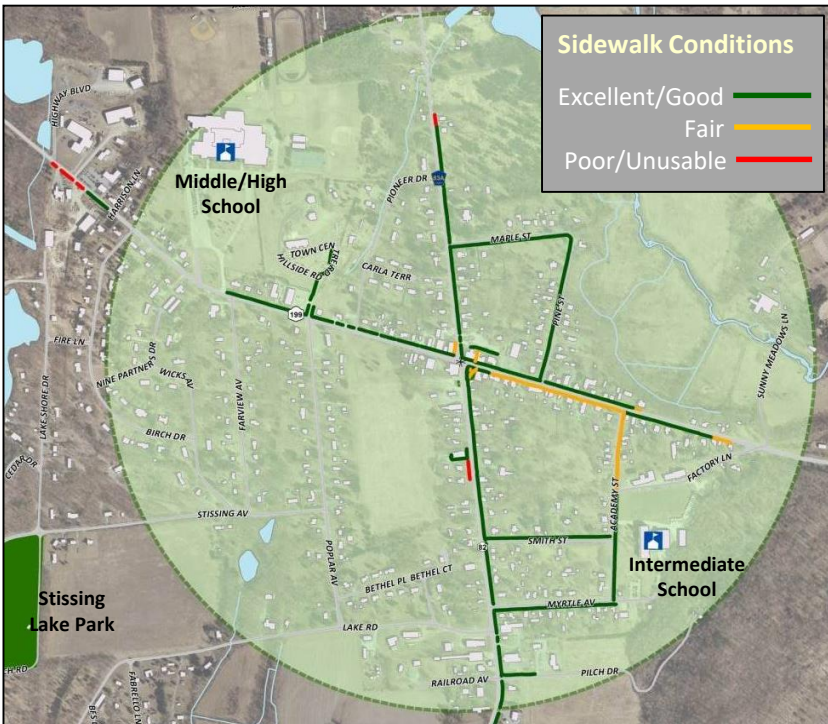


Church Street, Looking East



Main Street, Looking South

2014



The inventory of current conditions, using Global Positioning System equipment, revealed that 85% of the hamlet's 2.9 miles of sidewalks were in excellent or good condition. The most substantial section rated only fair was the south side of Church Street and out Academy Street towards the Seymour Smith School.

To get public input on the project, the Task Force issued a written survey and held a public workshop in June 2014. Results showed that 83% walked and 33% biked 1-3 days a week or more. Building new sidewalks and trails, repairing the current sidewalks, and adding shoulders on some roads were deemed the best ways to encourage more walking and biking.

Recommended improvements and priorities are shown on the next page, grouped in three phases to allow gradual construction as funding becomes available. Striping crosswalks and shoulders is relatively inexpensive, while more expensive projects were placed in later phases. Primary destinations identified by the public for improved connections include the two school buildings, Stissing Lake Park, and the residential area north of the High School. The Pedestrian Plan report is available at: <http://www.co.dutchess.ny.us/CountyGov/Departments/TransportationCouncil/tcPinePlainsPedPlan.pdf>

# Town Center Design Concepts

The Town Center Revitalization Committee worked with Dutchess County Planning and Development on economic development ideas for the heart of the hamlet. Suggested improvements included narrowing the main intersection, new sidewalks around the Stissing House, street trees, reorganized rear parking lots, mid-block crosswalks, and potential locations for infill buildings. A new Theater Green was also proposed, framed by an outdoor dining patio at the historic Stissing House, an elevated side porch on the restored Memorial Building, and a multi-purpose stage with a backdrop view of Stissing Mountain.

## Pedestrian-Friendly Street Principles:

- Narrow street widths to slow down speeding vehicles;
- On-street parking for convenience and traffic calming;
- Canopy street trees for shade and sense of enclosure;
- Continuous storefronts with good window displays;
- Interconnected crosswalk and sidewalk system; and
- Pedestrian-scale signs and soft, color-quality lighting.

