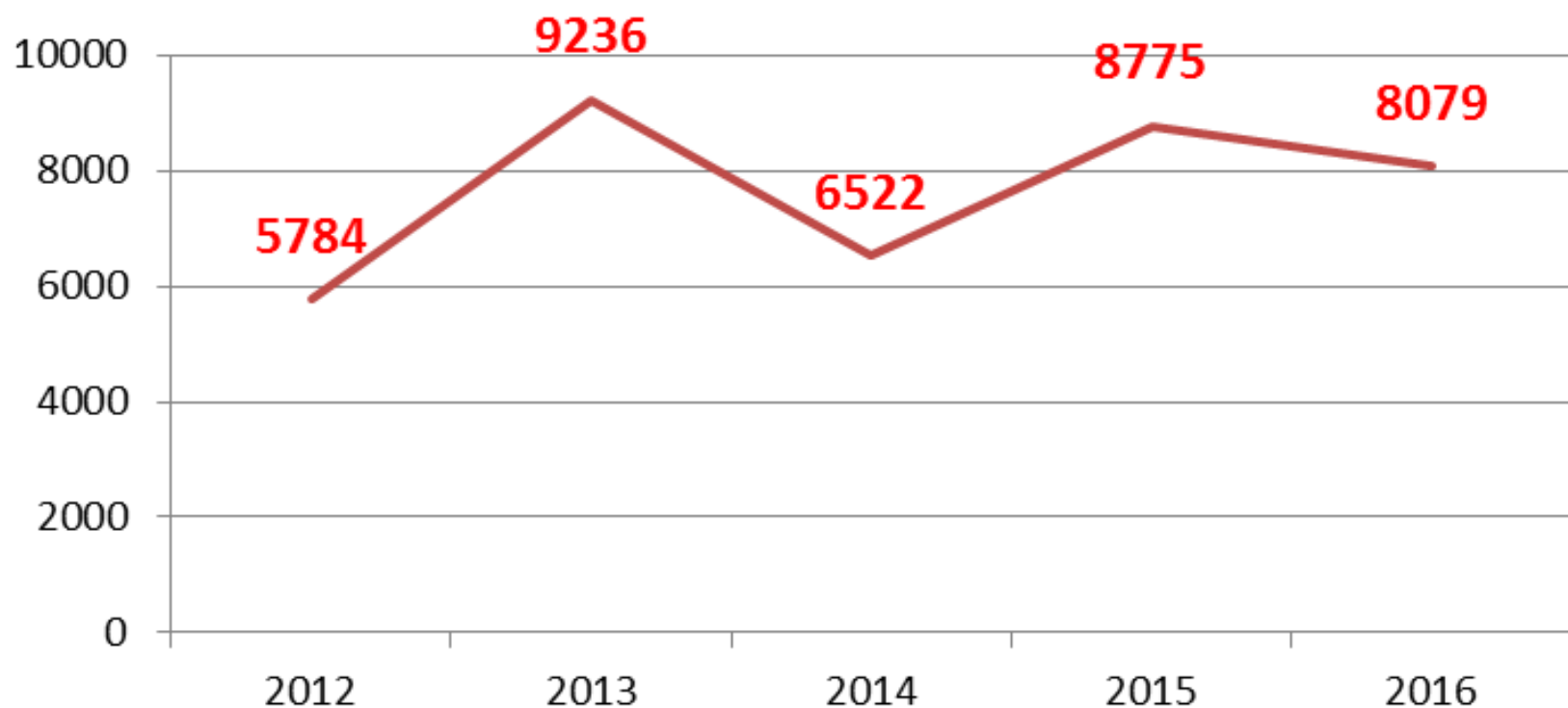


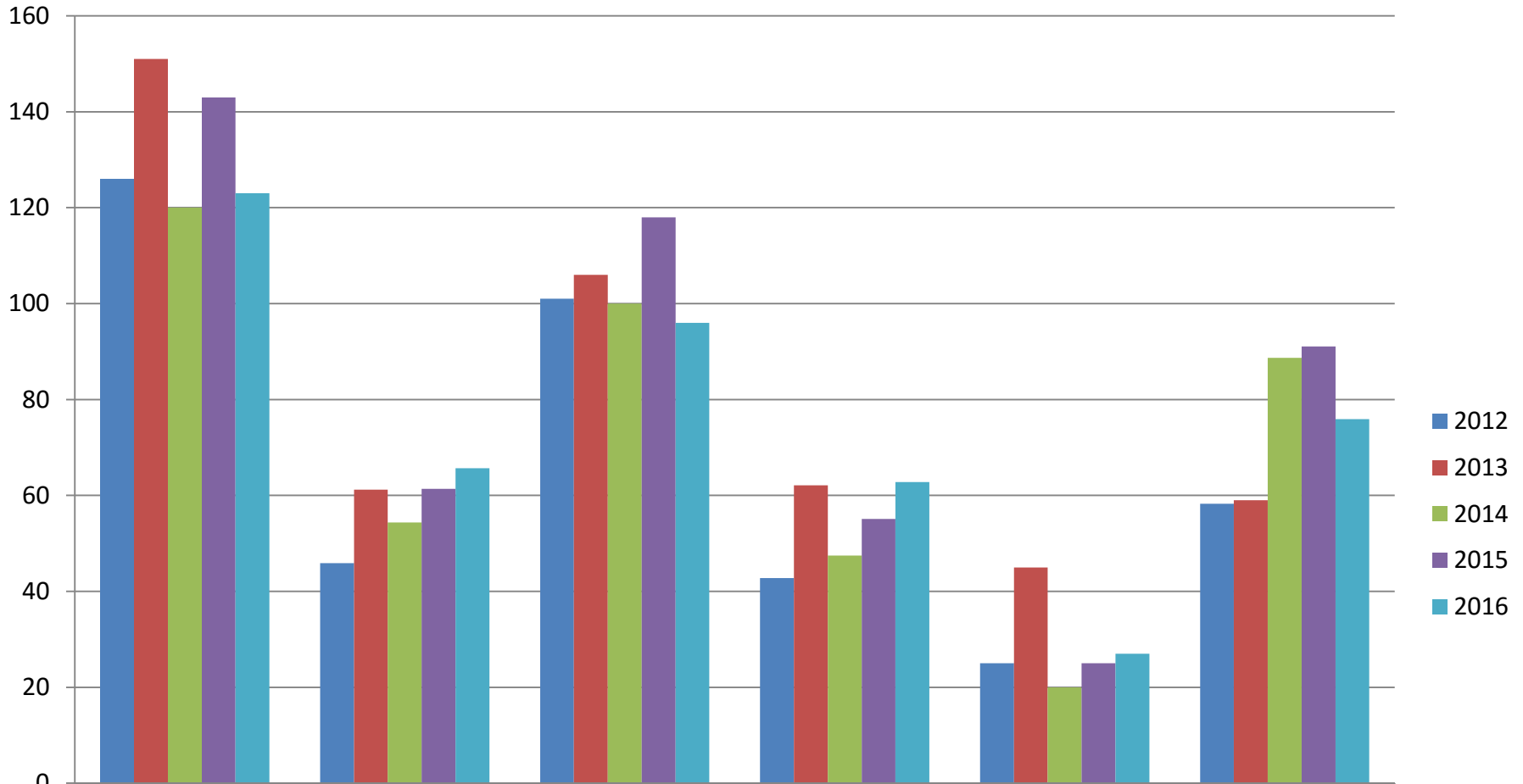
The Dutchess County Criminal Justice Council (November 2016)

**ALOS and use of Jail Bed Days
within the Dutchess County Jail -
Parole and Women**

Parole Offenders in DCJ - Total Jail Days Used - Jan. 2012 - Oct. 2016

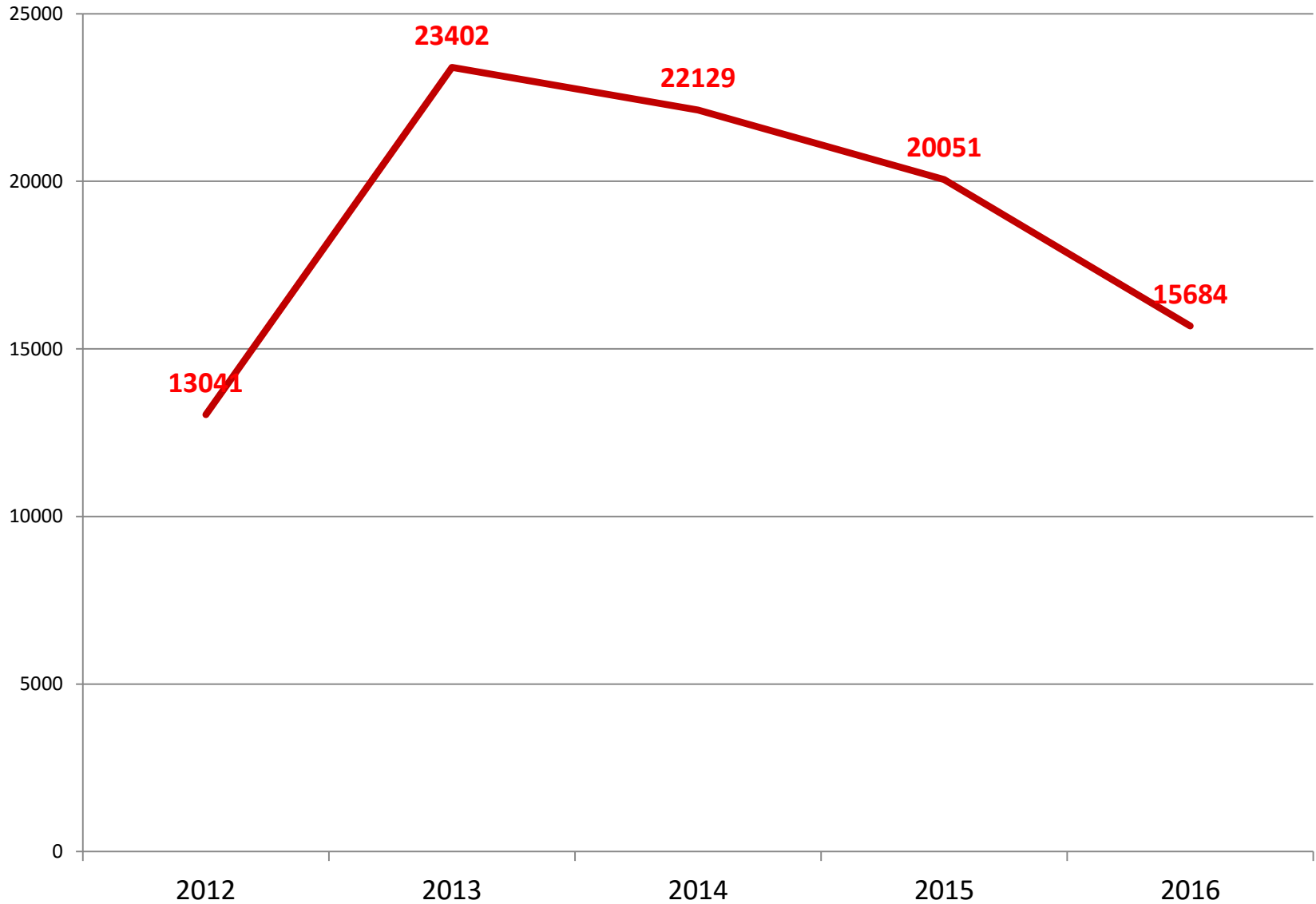


Parole Offenders - Average Length of Stay by Release Type

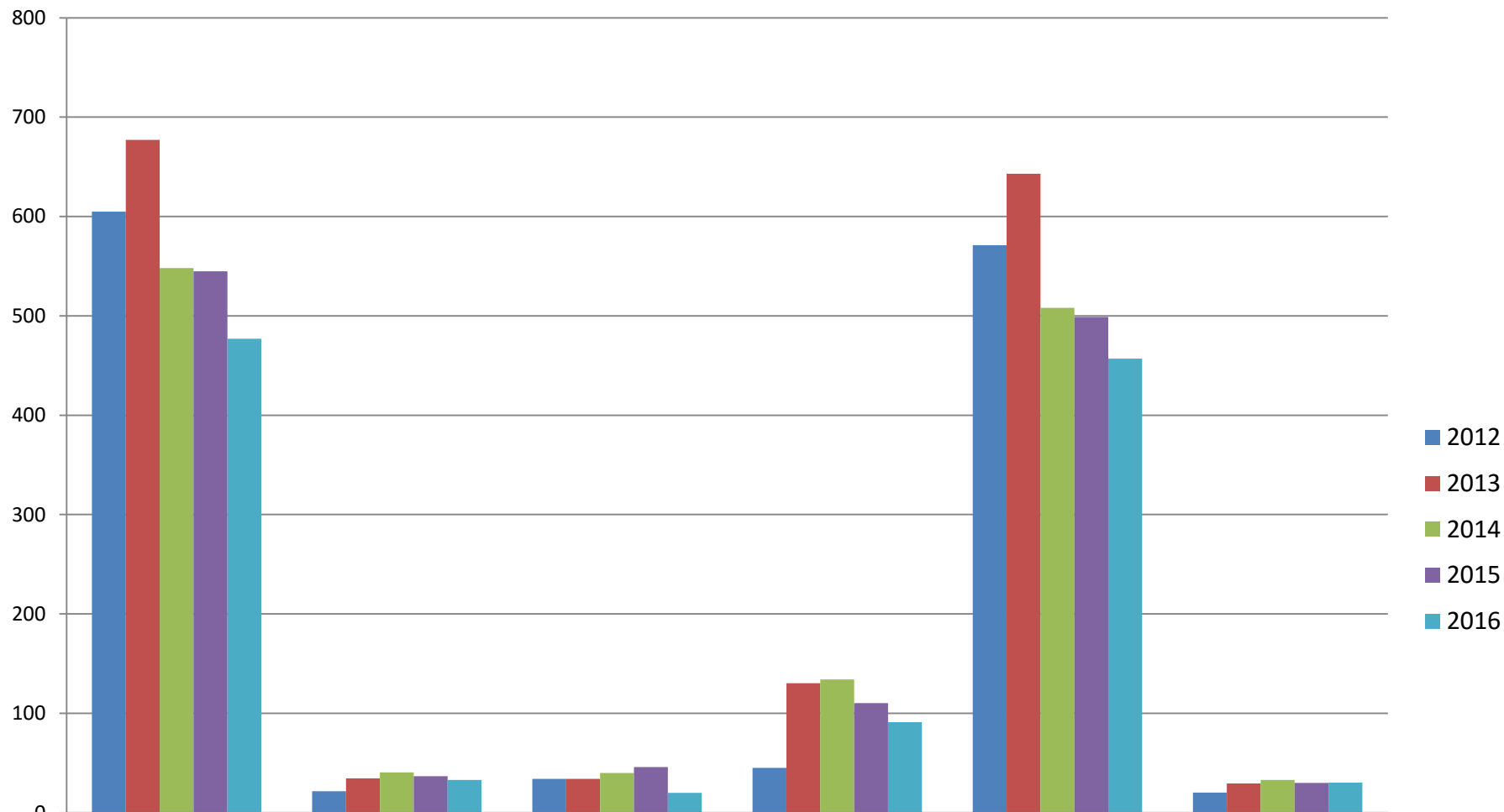


	# People	ALOS	Rel to Prison	ALOS	Rel to Street	ALOS
2012	126	45.9	101	42.8	25	58.3
2013	151	61.2	106	62.1	45	59
2014	120	54.4	100	47.5	20	88.7
2015	143	61.4	118	55.1	25	91.1
2016	123	65.7	96	62.8	27	75.9

Women Offenders in DCJ - Jail Days Used - Jan. 2012 – Oct. 2016



Women Offenders In DCJ - ALOS by Release Type - Jan. 2012 - Oct. 2016



	# Women	ALOS	Rel to Prison	ALOS	Rel to Street	ALOS
2012	605	21.5	34	45.1	571	20.2
2013	677	34.6	34	130.2	643	29.5
2014	548	40.4	40	134.2	508	33
2015	545	36.8	46	110.2	499	30
2016	477	32.9	20	91.1	457	30.3

ALL Releases 12/15/11 – 05/02/16 (Total N = 13,236)

BY ALOS	Inmates	% Inmates	ALOS	# Jail Days	% of all Jail Days
ALL	13236	100%	49.8	659132	100%
100 + Jail Days	2338	17.7%	193.6	452706	68.7%
All Others	10898	82.3%	18.9	206426	31.3%

ALL Female Releases 1/1/12 – 10/04/16 (Total N = 2852)

BY ALOS	Inmates	% Inmates	ALOS	# Jail Days	% of all Jail Days
ALL	2852	100%	33.1	94307	100%
100 + Jail Days	328	11.5%	168.8	55371	58.7%
All Others	2524	88.5%	15.4	38936	41.3%