

# DUTCHESS COUNTY LAKE WALTON PRESERVE DRAFT MASTER PLAN



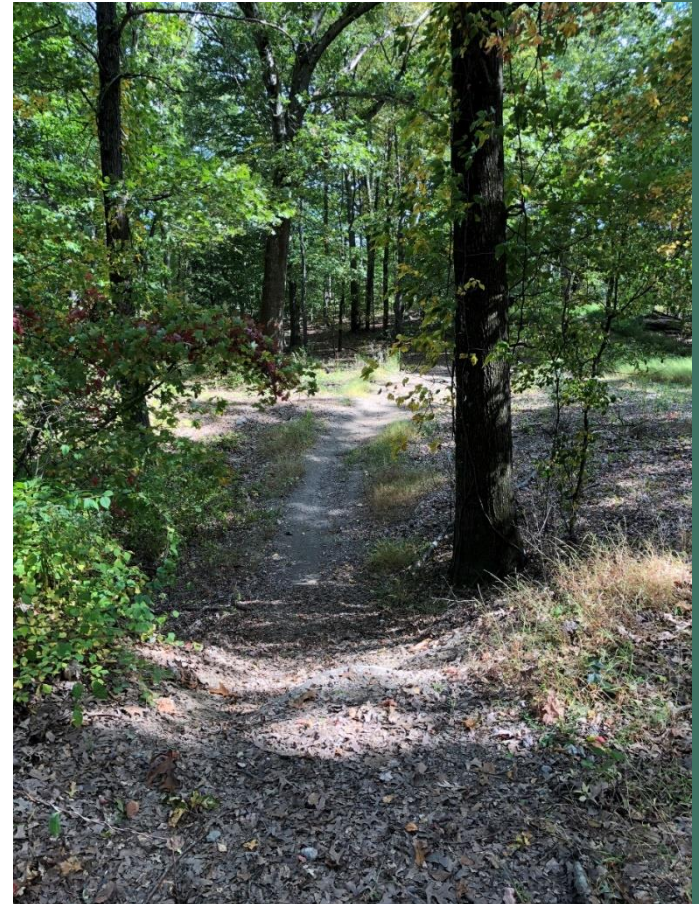
**PUBLIC INFORMATION MEETING**  
**OCTOBER 19<sup>TH</sup> & 20<sup>TH</sup>, 2020**



# AGENDA

## Welcome by County Executive Marcus Molinaro

1. Site History
2. Process to Prepare
3. Draft Concept Plan
4. Priority Projects
5. Q & A



# SITE HISTORY

**LAKE WALTON PARK**  
SWIMMING, BOATING, CAMPING, COTTAGES  
PUBLIC GROVE

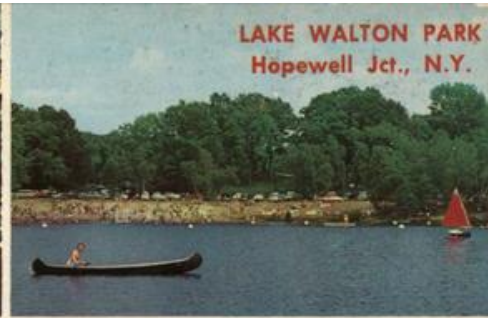
Location: 6 Miles North of Fishkill on Route 22 in Hopewell Junction

PRIVATE LAKE. PRICED FOR THE FAMILY  
MAN. OPEN 33 YEARS. VISITORS WELCOME.  
DRIVE UP AND LOOK AROUND.

Up to 6 in a car — \$1.00 weekdays  
\$1.50 Saturdays  
\$2.00 Sundays and  
Holidays



**LAKE WALTON** is a private lake owned by the Brincker-Hoff family since 1910. A 300 acre property with a spring fed lake located in the southern part of Dutchess Co., N. Y. between Rt. 82 and Rt. 376. Modern facilities with natural and artificial water supply. Cottages, Mobile home sites, Public beach, Picnic grove. Rental boats, Fishing and Camping.  
Tel: Area code 914 - 226-7050



# LAKE WALTON PRESERVE GOALS



*Explore. Learn. Experience.*

# SITE WALK WITH CORE TEAM



# CONCEPT PLAN

**Bird Blind Overlooks & Observation Platforms**

**Boardwalks & Overlooks**

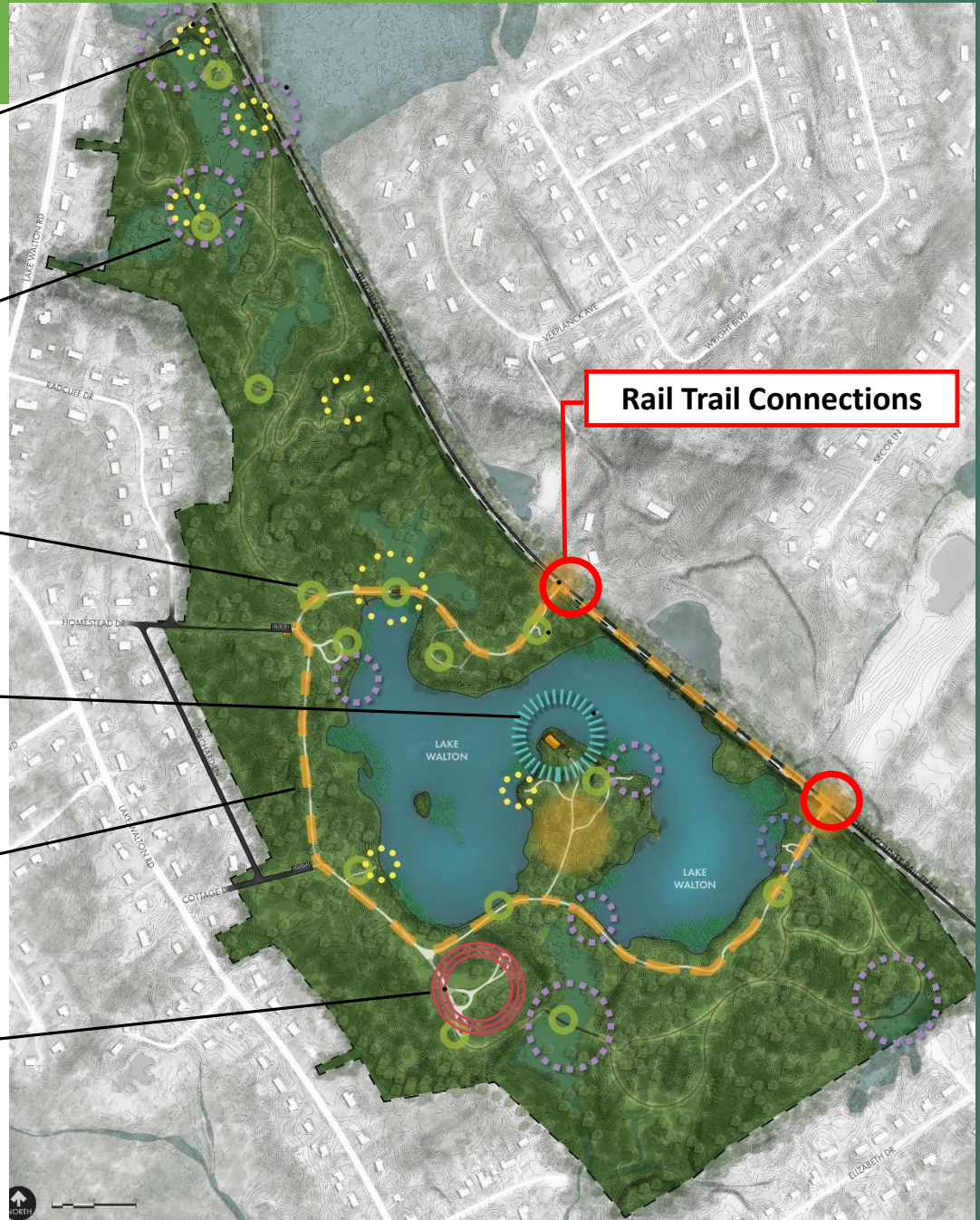
**Universal Sensory Educational Signage**

**Elevated Pavilion with Accessible Ramp**

**Universally Accessible Loop Trail**

**Sensory Exploration Patch & Classroom**

**Rail Trail Connections**



# CONCEPT PLAN

## Universally Accessible Loop Trail



## Elevated Pavilion with Accessible Ramp



# CONCEPT PLAN

## Bird Blind Overlooks and Observation Platforms

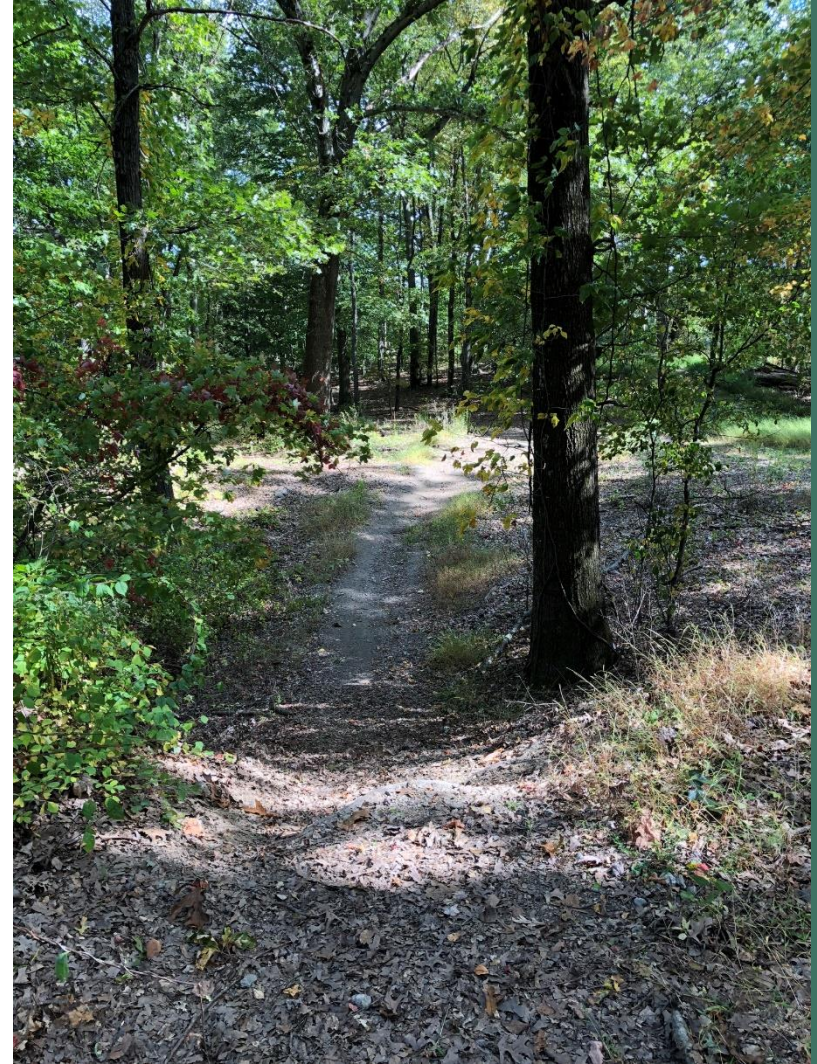


## Boardwalks and Overlooks



# PRIORITY PROJECTS FROM CONCEPT

- Parking areas
- Rail Trail Connection
- Initiate Loop Trail



# PUBLIC FEEDBACK & INPUT

Online Survey

[www.Dutchessny.gov/ParkSurvey](http://www.Dutchessny.gov/ParkSurvey)



# CONTACT YOUR LEGISLATORS TO EXPRESS YOUR SUPPORT

## **District 12 - East Fishkill**

**John D. Metzger - Assistant Majority Leader (R)**

E-Mail: [metzger4dc@gmail.com](mailto:metzger4dc@gmail.com)

64 Marges Way

Hopewell Junction, NY 12533

Cell: 845-206-3973

Business Fax: 845-486-2113

## **District 21 - East Fishkill**

**Stephen M. Caswell (R)**

E-Mail: [scaswell@dutchessny.gov](mailto:scaswell@dutchessny.gov)

345 Judith Drive

Stormville, NY 12582

Cell: 845-518-7236

Business Fax: 845-486-2113

# QUESTIONS & ANSWERS

