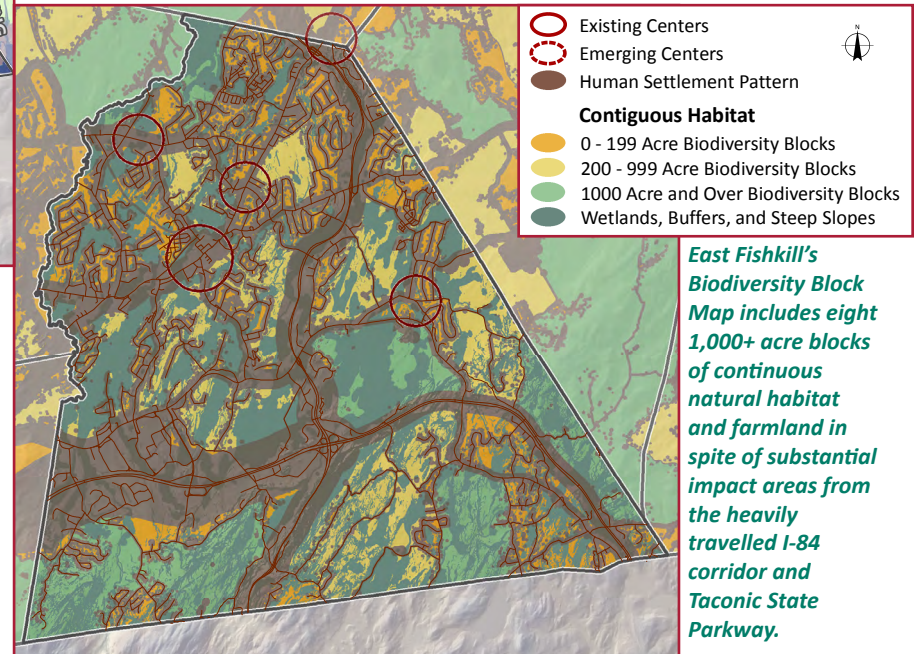


Town of East Fishkill

Centers: The Town updated its current [Master Plan](#) in 2002 and adopted its [Zoning Law](#) in 1974, with additional amendments over the years. In 2002 the zoning identified six hamlet areas, including the central hamlet of Hopewell Junction. The population of the Town of East Fishkill is 29,052 while the population in the Centers mapped to the left is 2,200, or 7.6% of the total. Within these Centers are 610 residential, 82 commercial, and 11 business/industrial, 22 public, and 312 vacant properties, according to Real Property Tax records.

Hopewell Junction is the recognized Town Center, containing the Town Hall, Community Center, Library, a Firehouse, and the Hopewell Recreation Area. It grew as a crossing point for 19th century railroads, but acts today as the busy retail crossroads of Routes 82 and 376. A restored Hopewell Depot train station is now at the southern end of the popular Dutchess Rail Trail. The State of New York is constructing a new 24-mile rail trail segment that will connect the Hopewell Depot to the Village of Brewster. The 2002 [Hopewell Hamlet Pedestrian Plan](#) and the 2005 Hopewell Junction Hamlet Study recommended a boulevard redesign for Route 82, consolidation of excessive driveways, and a complete sidewalk system connecting south to the Town Hall. Currently, Route 82 serves as a major connector road running through the Town Center. Route 82 is not pedestrian friendly and parking lots front many of the existing shopping plazas. The Master Plan calls for community services to be concentrated in Hopewell Junction and, to a lesser extent, other historic hamlets.

Fishkill Plains, home to an elementary school and the junior high school, has been transformed over the last decades from a rural crossroads hamlet into a significant commercial strip along Route 376. The hamlet would benefit from a retrofitted sidewalk and crosswalk system to connect with nearby residential subdivisions and the Dutchess Rail Trail crossing at the west end of the commercial area. Other smaller hamlets, such as **Arthursburg, Stormville, Clove Branch Junction, Gayhead, and Pecksville**, are recognized



East Fishkill's Biodiversity Block Map includes eight 1,000+ acre blocks of continuous natural habitat and farmland in spite of substantial impact areas from the heavily travelled I-84 corridor and Taconic State Parkway.

with commercial zoning, but generally lack an integrated hamlet approach to mixing uses and making walkable connections.

Greenspaces: East Fishkill has eight areas of continuous greenspaces with agricultural and natural land over 1,000 acres in size. The Town also worked with Hudsonia in 2002-2003 to produce a [Significant Habitats](#) report and detailed habitat maps. The Town has 155 agricultural district parcels, 4,161 acres in agricultural production, and 4,047 acres either under conservation easement or otherwise protected. In 1999 the Town completed a Recreation Study for its extensive park system.

Greenway Corridors: The Town has 16,505 acres of unbuildable area. These stream corridors, State and Federal wetlands with their buffers, floodplains, and steep slopes of 20% or more act as biodiversity connectors between greenspaces. East Fishkill also has 126 miles of streams, 297 miles of roads, 12 miles of sidewalks, and 12 miles of trails, including major segments of the Dutchess Rail Trail and the Appalachian Trail.