

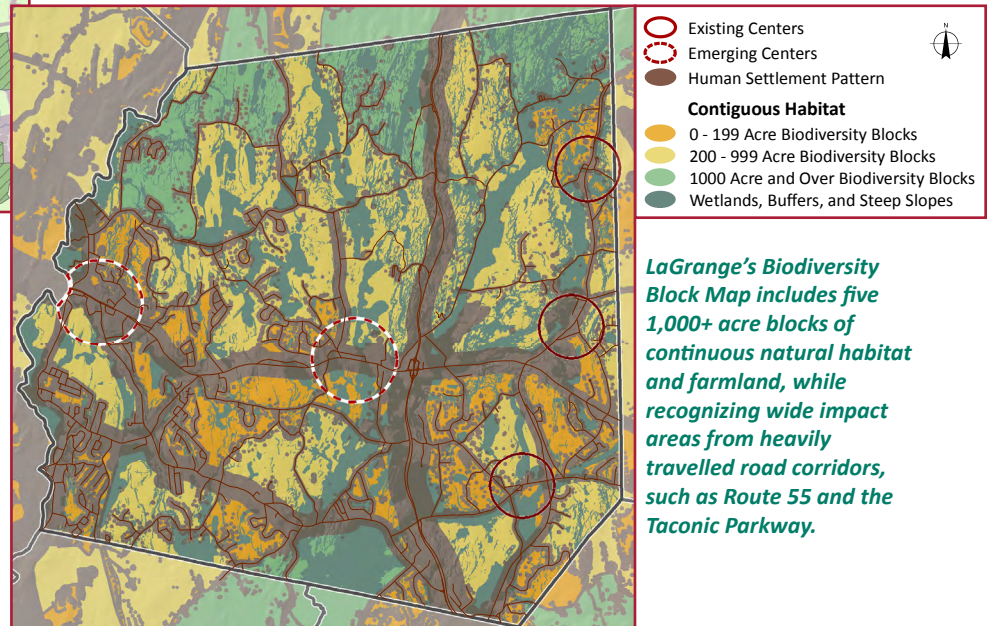
Town of LaGrange

Centers: The Town of LaGrange updated its Comprehensive Plan in 2005 and adopted its [Zoning Law](#) in 2006, with additional amendments in later years. The zoning recognizes an emerging Town Center, three gateway hamlets, and three smaller crossroads hamlets. The population of the Town of LaGrange is 15,723 while the population in the Centers is 1,454, or 9.2% of the total. Within the Centers are 414 residential, 60 commercial, 44 business/industrial, 18 public, and 81 vacant properties, according to Real Property Tax records.

The **LaGrange Town Center** along Route 55 is designed to replace the commercial strip in Freedom Plains with a walkable, mixed-use center around the Arlington High School and Town Hall area. The Town Center was identified in the 1987 Plan, but was finally adopted into the zoning in 2003, along with design standards and an [Illustrative Plan](#) showing roundabouts to slow vehicles and eliminate traffic signals, a main street commercial character with a central civic green, a mix of housing types, and residential blocks to the south. A large proposal consistent with the plan was put on hold in the recent recession, but other aspects have been implemented, including the Route 55 roundabouts and a neighborhood grocery store.

Manchester, Red Oaks Mill, and Arthursburg were designated as Gateway Hamlets in 2014. All three are located at major entrance points to the Town. Arthursburg forms the first impression off the Taconic State Parkway. Red Oaks Mill is primarily centered in the Town of Poughkeepsie, but includes commercial and residential uses in LaGrange. Manchester has the largest grouping of commercial and industrial uses in the Town, but has a wide highway street-scape, too many front parking lots, and very little pedestrian activity. New Gateway Hamlet design standards encourage infill development, pedestrian-friendly connections, screened parking lots, and a broader mix of uses to create a better business environment and more attractive entrances to the Town.

LaGrangeville, Billings, and Moores Mills are smaller historic hamlets in the eastern section of the Town. The zoning allows a limited range of residential, commercial and public uses, designed to encourage compatible new development, while maintaining their traditional hamlet scale and character.



Greenspaces: The Town has five areas of continuous greenspaces with agricultural and natural land over 1,000 acres in size. It has 239 agricultural district parcels, 4,431 acres in agricultural production, and 2,607 acres either under conservation easement or otherwise protected. LaGrange passed an open space bond referendum in 2008, funding a purchase of development rights program to protect key properties in the Town. It has five town parks, including the 130-acre Freedom Park on Skidmore Road. The 590-acre James Baird State Park is also in the Town, just north of the Town Center.

Greenway Corridors: LaGrange has 9,933 acres of unbuildable area. These stream corridors, State and Federal wetlands with their buffers, floodplains, and steep slopes of 20% or more act as biodiversity connectors between greenspaces. The Town also has 87 miles of streams, 160 miles of roads, 7 miles of sidewalks, and 10 miles of trails, including a segment of the Dutchess Rail Trail.