

Town of Milan

Centers: Milan adopted its latest Master Plan in 2007 and updated its **Zoning Law** in 1994, although it has added numerous zoning amendments over subsequent years. It recognizes two established hamlet centers, LaFayetteville and Rock City, even if the latter hamlet overlaps the boundaries of the neighboring towns. The population of the Town of Milan is 2,374 while the population in the Centers is 254, or 10.7% of the total. Within the Centers are 94 residential, 3 commercial, 3 business/ industrial, 1 public, and 69 vacant properties, according to Real Property Tax records.

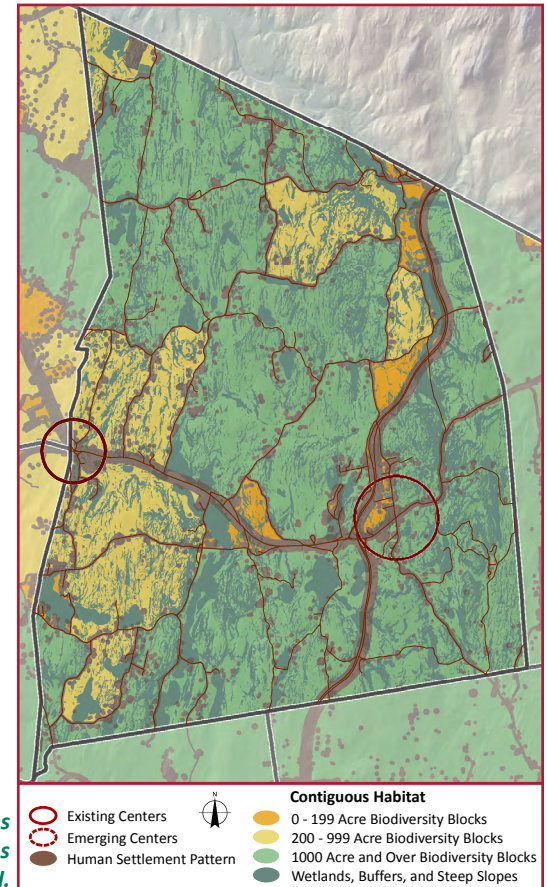
Milan is primarily a rural, agricultural town, with a few commercial businesses along Route 199 in intermittent Highway Business districts. Milan has the smallest population of any town in the County. The hamlets are more residential than commercial centers. In fact, the zoning states that the purpose of the hamlet districts is to preserve and enhance the historic character of LaFayetteville and Rock City and emphasizes limitations on additional development that might compromise their unique qualities. The hamlet district zoning does encourage traditional mixed-use development that will serve as focal points for community life and recommends avoiding strip development.

LaFayetteville at the crossroads of Route 199 and County Route 53 is the primary center in the Town, although the corner store burned down and has yet to be rebuilt. The hamlet was named after Marquis de Lafayette, the Revolutionary War hero, who visited the area in 1824 on a grand American tour. The historic Lafayette House with its distinctive two-level porch dates back to that same era, when it served as a stagecoach stop. The Town Recreation Park is in LaFayetteville, with Wilcox Memorial County Park to the east and the Taconic State Parkway just to the west.

Rock City is located at the borders of Red Hook and Rhinebeck, where Routes 199 and 308 come to a fork in the road. Originally home to a sawmill and grist mill in the 1800s, only a few commercial uses and a church still exist in this primarily residential hamlet.

Greenspaces: Milan has 10 areas of continuous greenspaces over 1,000 acres in size. The Town has 137 agricultural district parcels, 3,089 acres in agricultural production, and 2,364 acres either under conservation easement or otherwise protected.

Greenway Corridors: The Town has 8,521 acres of unbuildable area. These stream corridors, State and Federal wetlands with their buffers, floodplains, and steep slopes of 20% or more act as biodiversity connectors between greenspaces. Milan has 81 miles of streams, and 102 miles of roads, no sidewalks, but 9 miles of trails.



Milan's Biodiversity Block Map includes ten 1,000+ acre blocks of continuous natural habitat and farmland.

