

# First Friday San Gennaro and Walk A Mile Event Summary

**Date:** Friday, October 4, 2019, 5:00 – 8:15 p.m.

**Location:** Mill Street at Dongan Place

**Weather:** Crisp fall day, 45-55 degrees, cloudy

## Overview

- Project Team interacted with tens of attendees of the Festival, handing out bilingual project fact sheets and inviting participation in three activities (details described below).
- 23 People signed up for project emails
- Zipcodes of participants included: **12601, 12603**, 12569, 12508, 12590, 12542, 12602, 12578, 12538, 12588

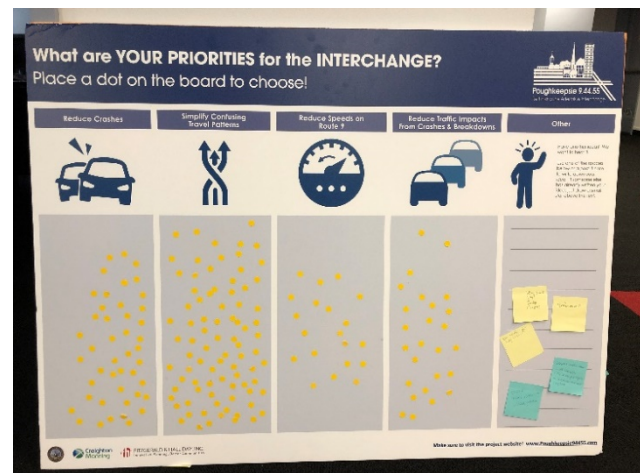
## What are Your Priorities for the Interchange?

*This board promoted participants to select up to two of the potential transportation priorities for the Interchange, from the list that follows.*

Priorities	Dot Count	Percent
<b>Simplify Confusing Travel Patterns</b>	<b>85</b>	<b>48%</b>
Reduce Crashes	45	26%
Reduce Traffic Impacts from Crashes & Breakdowns	26	15%
Reduce Speeds on Route 9	20	11%
<b>Total</b>	<b>176</b>	<b>100%</b>

## Comment Themes (5 total)

- Bridge traffic
- Enforcement and tolls
- Can traffic control measures help?
- By increasing travel choices can we reduce pollution and improve the interchange?
- Can we encourage nearby tourists to come to Poughkeepsie?

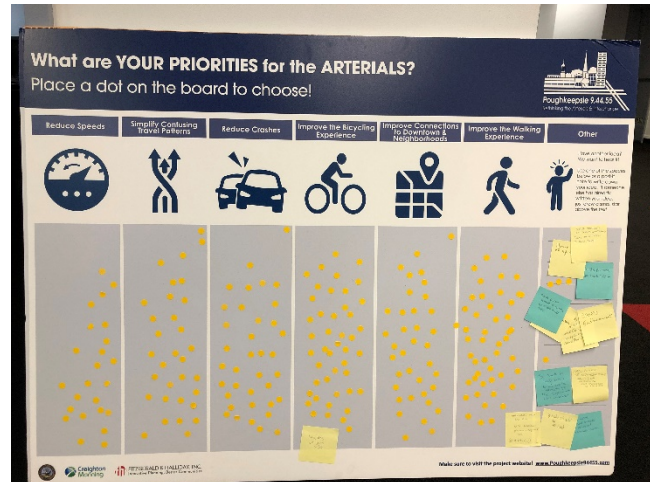


## What are Your Priorities for the Arterials?

*This board prompted participants to select up to two of the potential transportation priorities for the arterials, from the list that follows.*

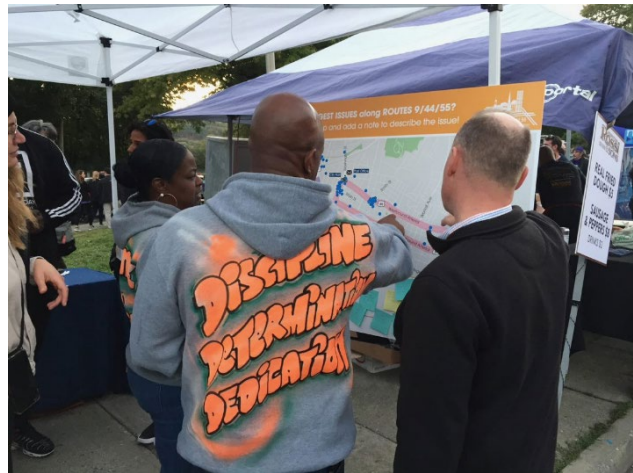
### Comment Themes (13 total)

- Debate about speed (currently feels like speeds should be high, desire for speeds to decrease in the future, and potential for signal coordination to help this)
- Maintenance concerns
- Desire for two-way local streets and neighborhood scale
- Improve access to neighborhoods Main Street, and train station
- Desire for places to rest along the sidewalks, especially near bus stops
- Confusion over biking – some say it is currently illegal, others would like bike lanes in both directions
- Availability of parking for those that need it (seniors, mothers of small children)



### Where are the Biggest Issues along Routes 9/44/55?

*This board solicited feedback on problematic locations within the study area, asking participants to point out issues they could recall – and potential solutions. Each participant could place up to 4 dots.*



*Top five locations flagged were: Route 9/44/55 Interchange; Columbus Drive/WB Route 55; Garden Street/WB Route 55; Smith St/WB Route 55; and the 44/55 crossover near the eastern end of the study area. See page 4 for a map showing distribution of dots placed.*

### Comment Themes (41 total)

- Interchange
  - Bridge congestion, especially at merge to 2 lanes, especially during p.m. peak. Route 9 interchange convergence is a challenge to navigate.
  - Aggressive driving, speed inconsistencies, confusion and lack of intuitive exits and merges. Potential for signage and enforcement of yields to improve this.
  - Train station congestion – potential for traffic signal?
  - Crossing the interchange on foot is extremely dangerous.
- Arterials
  - Westbound Arterial near Main St and before the Route 9 Interchange
    - Short merge at the intersection of Columbus Dr. and W.B. arterial, drivers are forced onto Route 9 or the bridge if they miss it. Similarly, making a left on the arterial off Washington Street is difficult
    - Drivers circle near Main St/arterials for on-street parking
    - Overhead signs needed to guide traffic on westbound arterial
    - Long crosswalk at Main/Washington – needs protection from left merging vehicles (and note of current fast speeds there)
  - Lack of lane markings on Smith St, Clinton St, Hooker Ave, confusion over right of way, intersections with Westbound Arterial and desire for safer pedestrian crossings at these streets/intersections
  - At the 44/55 split, confusing travel patterns especially for eastbound traffic. Confusion over nearby traffic circles and desire for synchronization of signals
  - Desire for pedestrian crossing locations near special land uses: Early Learning Center, City Hall, senior centers, bus stops, medical facilities
  - Character
    - Street drains are very low
    - Desire for two lane, tree lined with bike lanes
    - The entire Arterial cuts off the whole neighborhood. Perception that Main Street is not safe.
    - Blocks between the arterials deserve attention – long blocks, dangerous mid-block crossings, no houses
    - Currently drivers speed right through city instead of stopping, concerns about safety with downtown walkers