



**CITY OF BEACON PEDESTRIAN FACILITY INVENTORY**  
**BICYCLE-PEDESTRIAN ADVISORY COMMITTEE (BPAC) MEETING**  
**APRIL 30, 2026**

---

# City of Beacon Pedestrian Facility Inventory

---

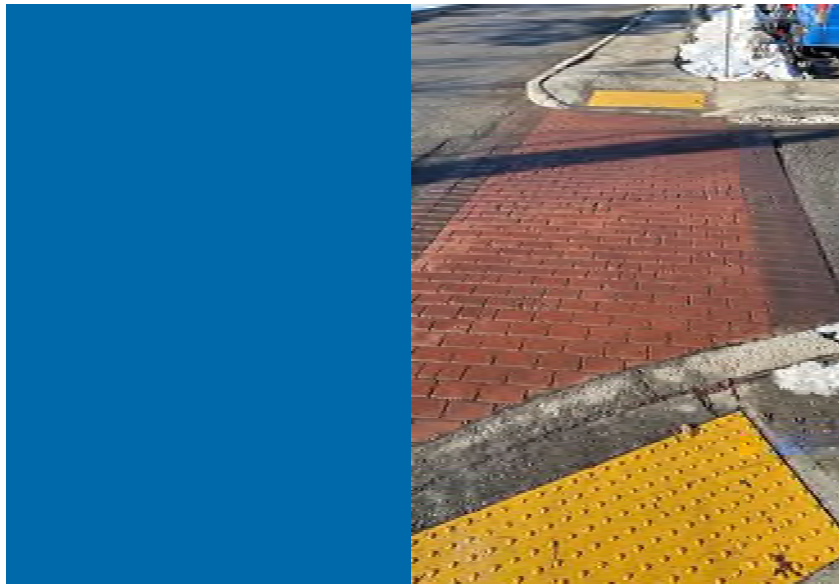


## Project Intent:

Create a database of the location and condition of pedestrian facilities throughout the City of Beacon to assist the City in planning construction and maintenance activities, as well as future capital projects.

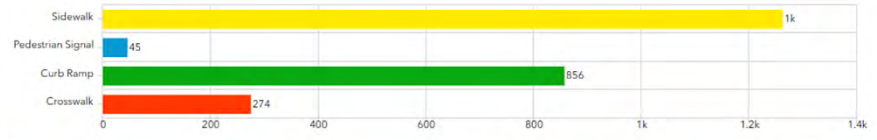
# Pedestrian Facility Inventory captured data on:

- Sidewalks
- Curb ramps
- Pedestrian signals
- Crosswalks

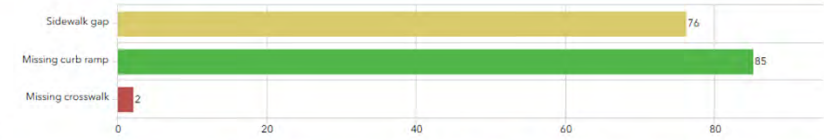


# DCTC – Beacon Pedestrian Infrastructure Inventory

## Existing Features Inventory

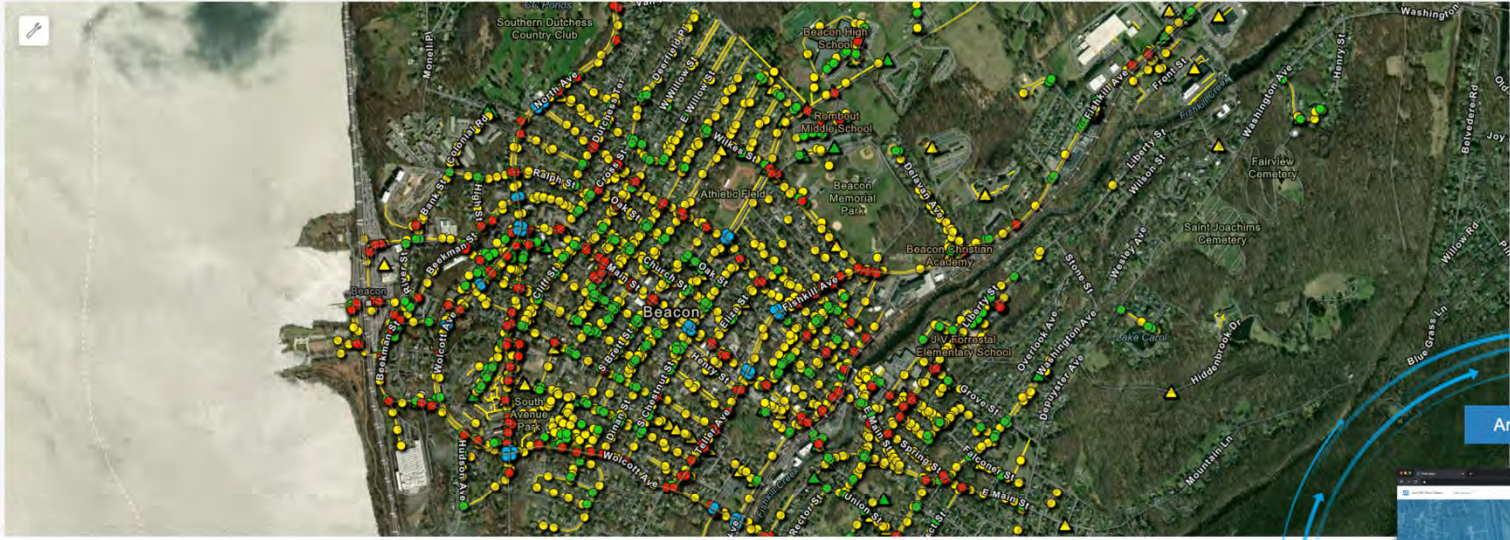


## Missing Features Inventory

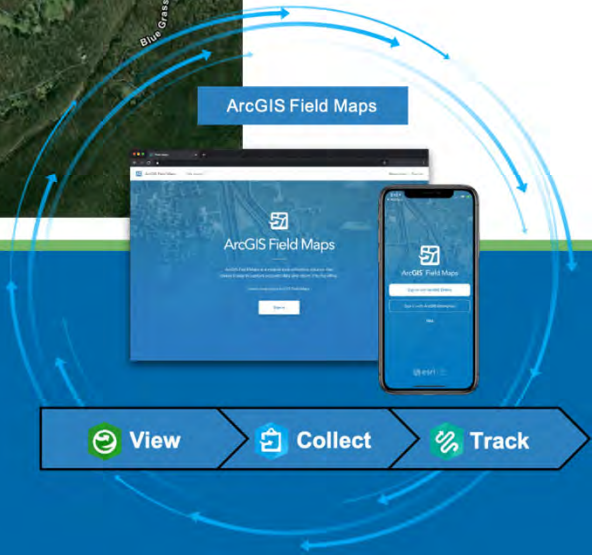


Observed features:  
**2.4k**

Missing features:  
**164**



# Data Collection



# Sidewalk & Curb Ramp Evaluation Criteria and Ratings



Condition Rating	Description	Recommendation
1 – Poor	Access for persons with disabilities is impossible or very difficult. Not constructed to current standards.	Improvements are strongly advised.
2 – Fair	Access is possible with some difficulty. Not constructed to current standards.	Improvements are advised but less critical.
3 – Good	Generally accessible but lacking one or more features to satisfy current standards.	Improvements are not critical but beneficial.
4 – Very Good	Fully accessible to persons with disabilities and compliant with current standards.	Improvements are not required.

# Ratings



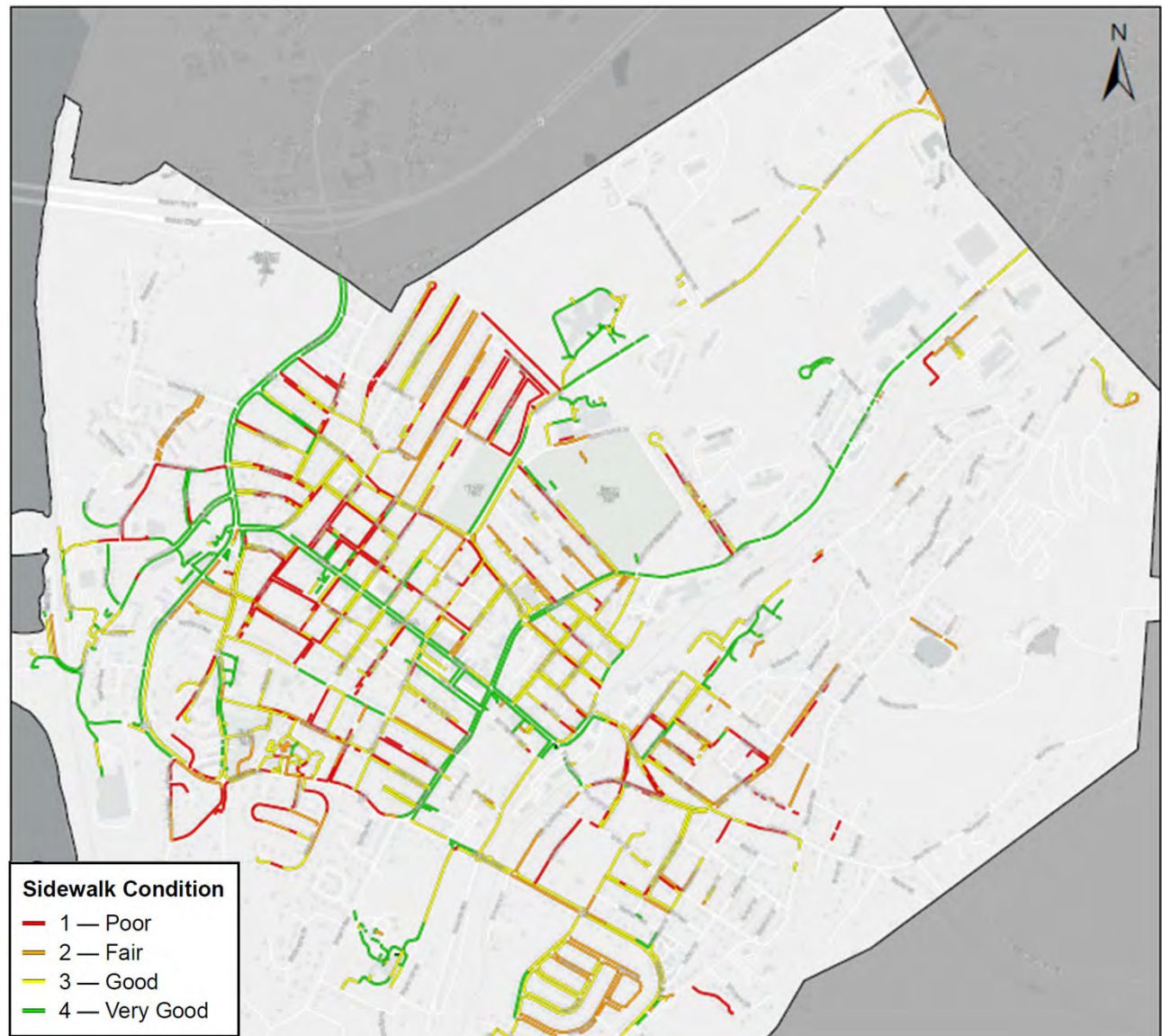
## Sidewalk Assessment:

	1 – Poor	2 – Fair	3 – Good	4 – Very Good
Length of Sidewalk (feet)	54,347	46,903	113,912	65,883
Percentage of Total	19%	17%	41%	23%

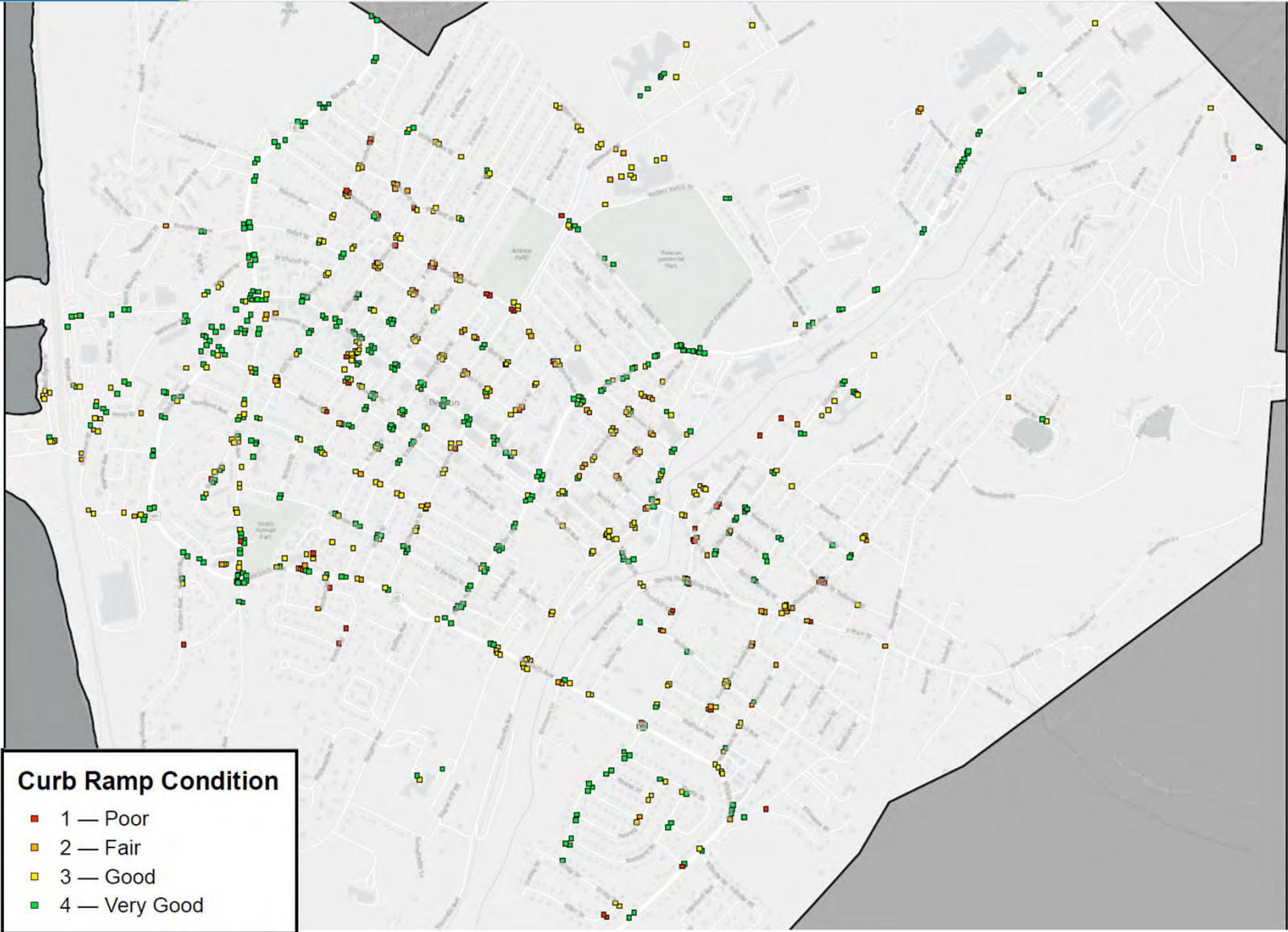
## Curb Ramp Assessment:

	1 – Poor	2 – Fair	3 – Good	4 – Very Good
Number of Curb Ramps	53	103	298	402
Percentage of Total	6%	12%	35%	47%

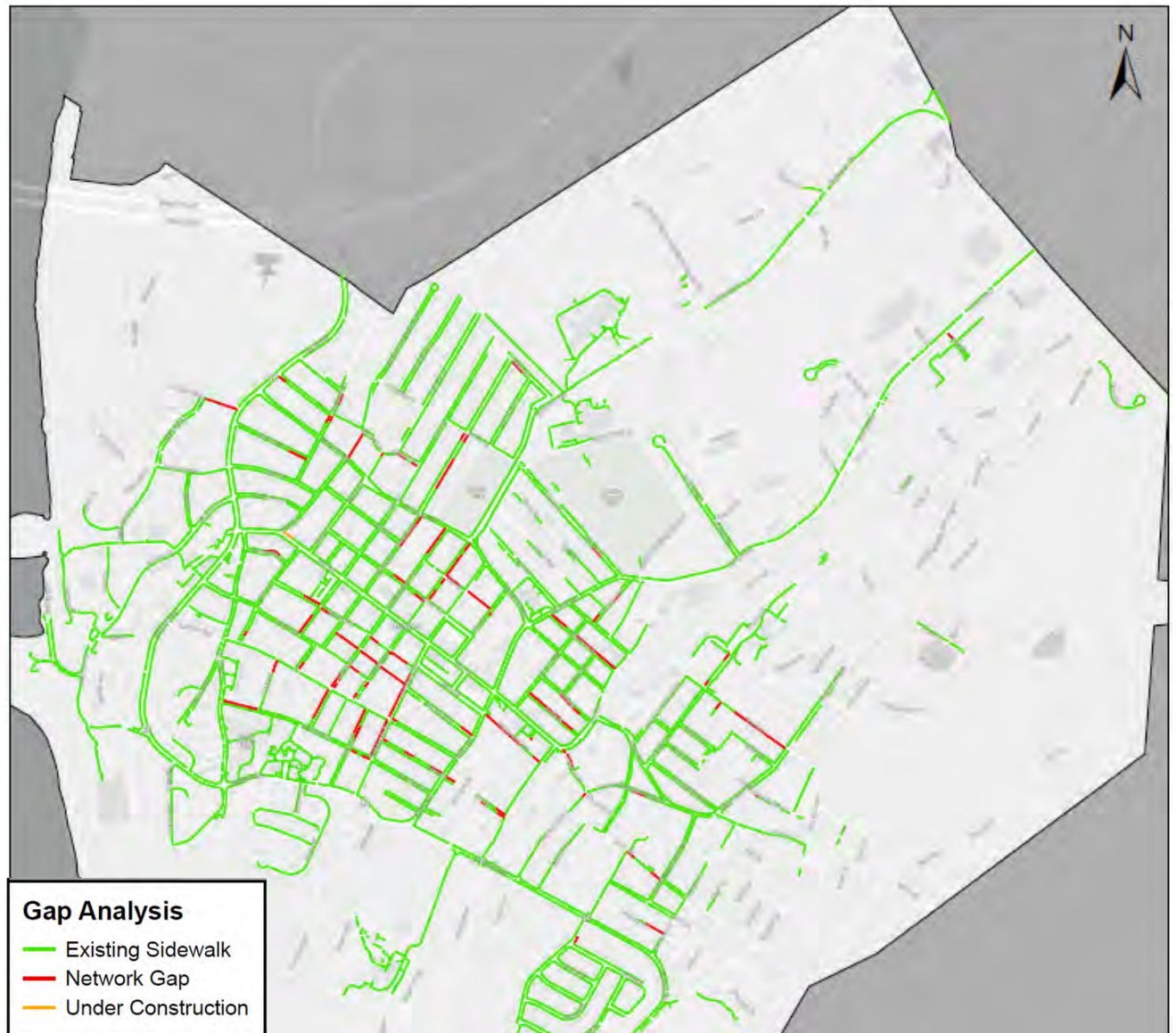
# Sidewalk Condition



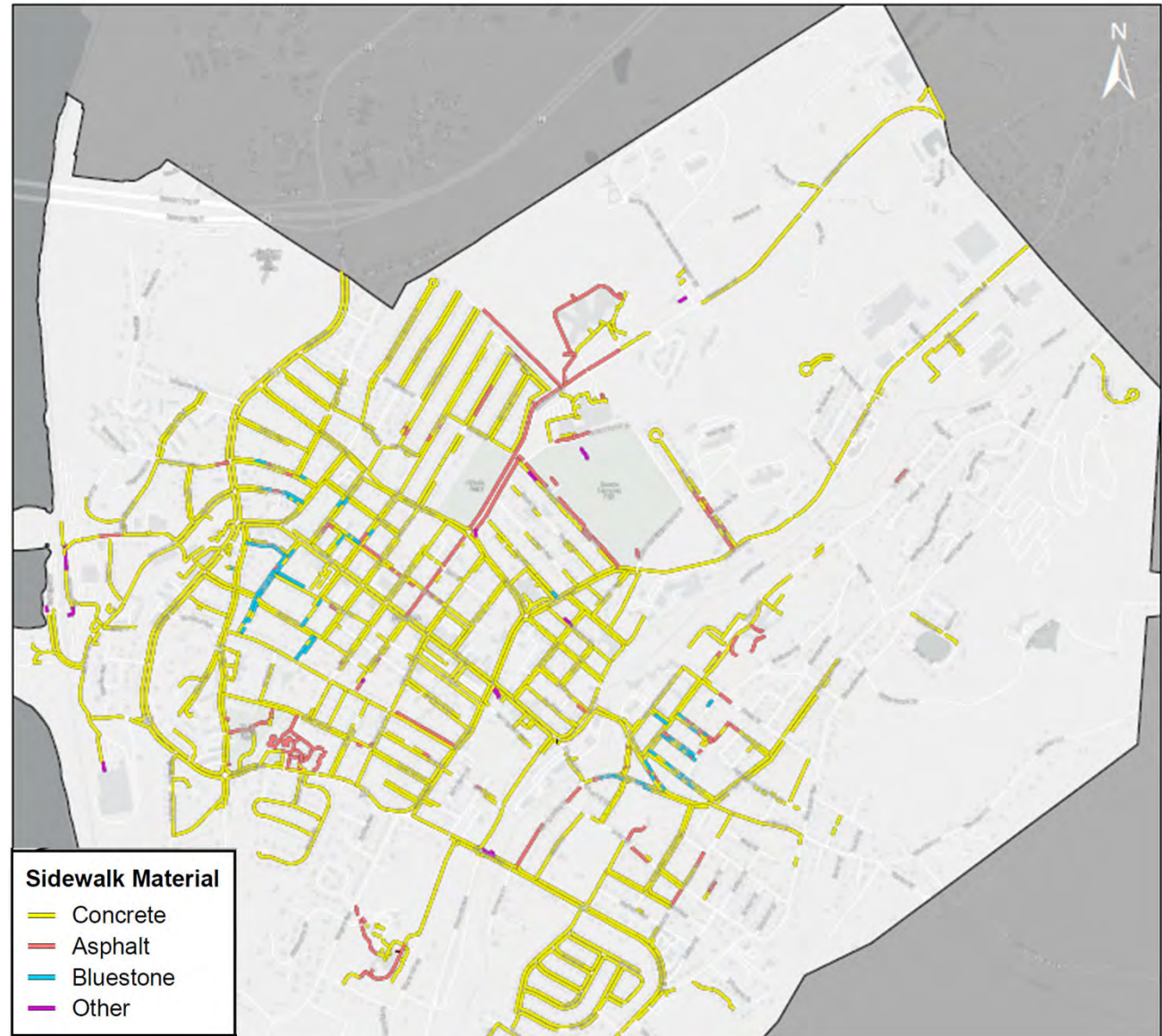
# Curb Ramp Condition



# Sidewalk Gaps



# Sidewalk Material



# Pedestrian Signals Evaluation Criteria



Does the pedestrian signal function correctly?

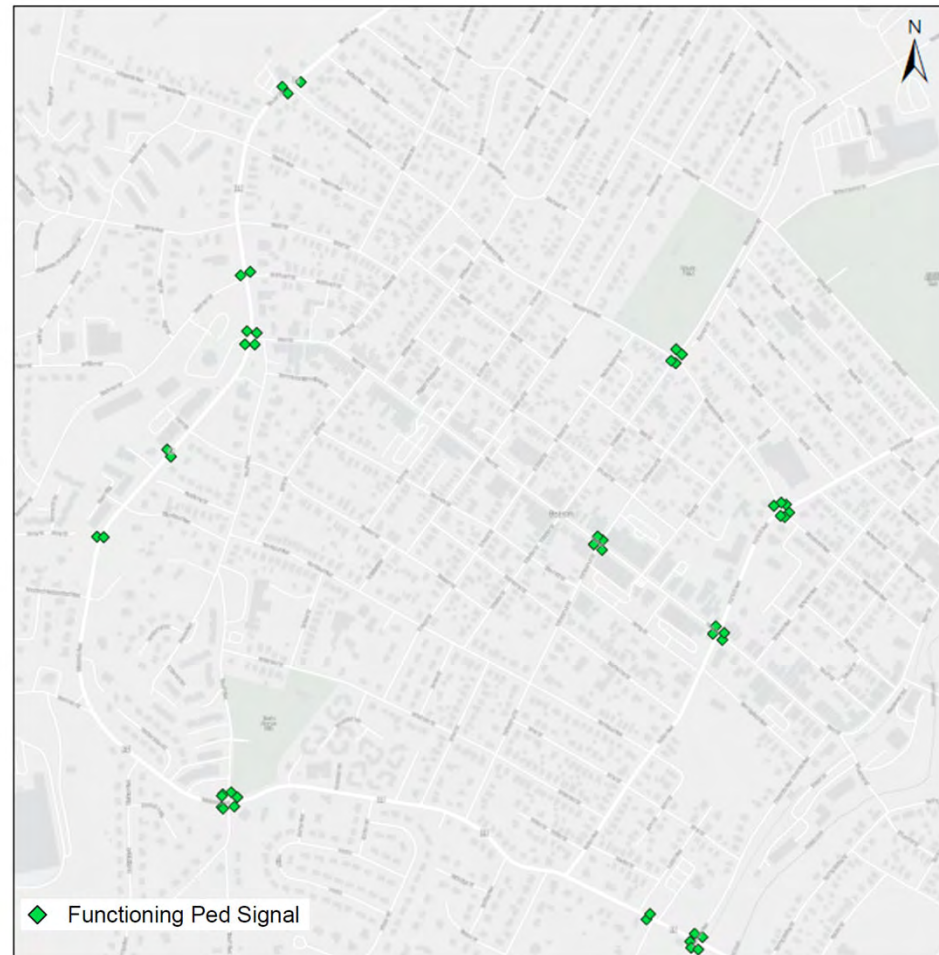
Is there push button equipment?

Is the push button equipment functional?

Is the push button audible?



# Pedestrian Signals



# Crosswalk Evaluation Criteria and Ratings



Condition Rating	1 – Extremely deteriorated / not visible	2 – Visible with some paint chipping / damage	3 – Adequate	4 – Like new
Number of Crosswalks	5	30	121	118
Percentage of Total	2%	11%	44%	43%

# Crosswalk Condition



# Questions?

Thank You

**Creighton Manning Engineering & Surveying, PLLC**

Amanda J. LaRosa, PE

[alarosa@cmellp.com](mailto:alarosa@cmellp.com)

[www.cmellp.com](http://www.cmellp.com)

Tel. 914.307.0041