

East Fishkill Rail Trail Links

An Ask, Accompanied by Background w/ More Twisted Sub-Plots
Than A Soap Opera

January 28th, 2021

Michael O'Brien

Outline

- The Ask
- The Background
 - East Fishkill Rail Links Task Force
 - Stormville
 - Hopewell ...Act 1
 - A Cataclysmic Event
 - Hopewell...Act 2
- The Ask (Again)

The Ask:

- How do we improve the Rail Trail as a commuter artery?...How do we get more people to use it to get to work?To go shopping?
 - Bus connections?
 - Connecting bike lanes?

Why? East Fishkill is pursuing grants that incent improved utilitarian use.

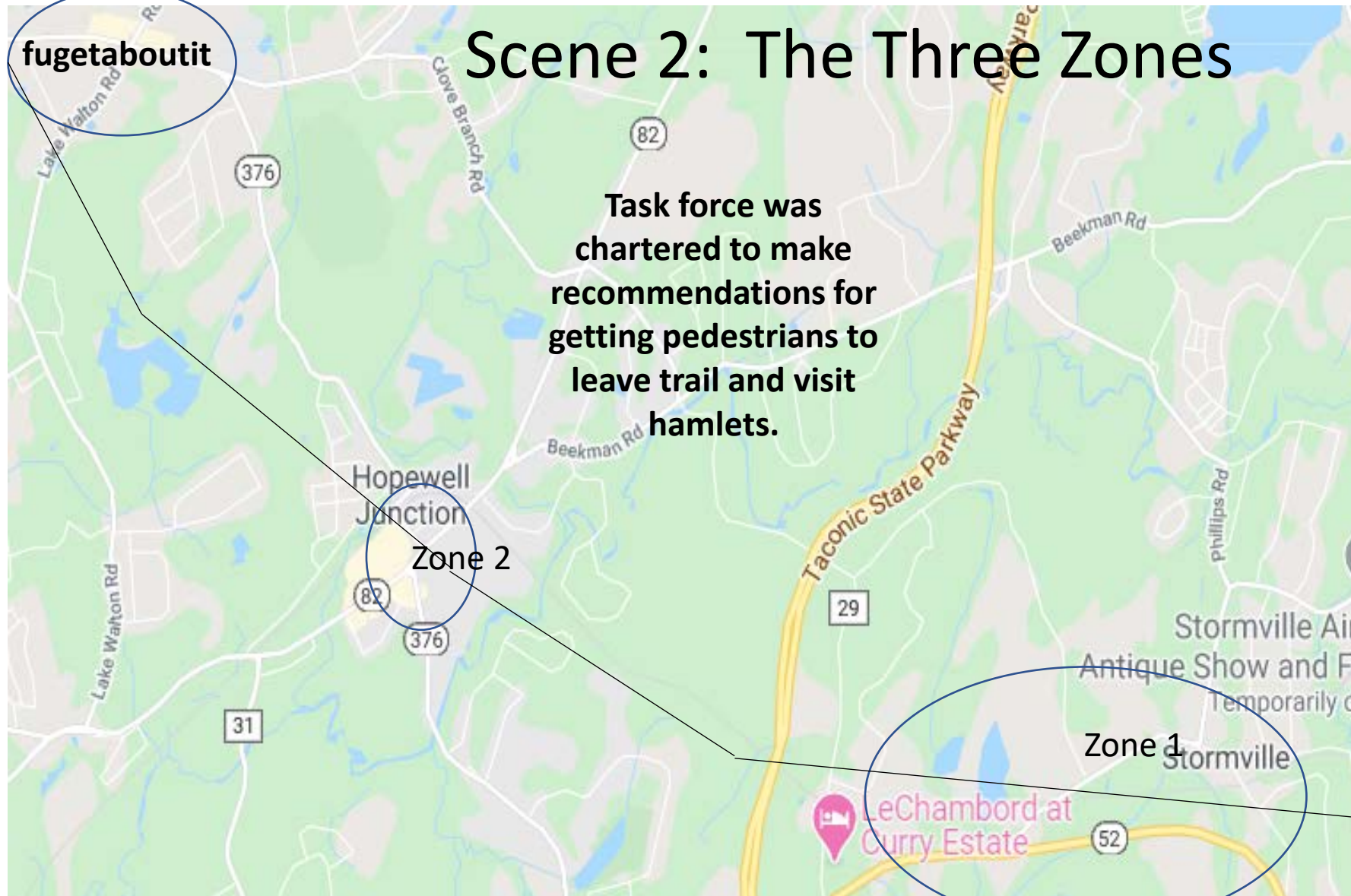
Background – Act 1, Scene 1

- In 2021, the new Maybrook Trail will link to the existing Stienhaus Dutchess Rail Trail, which will:
 - Greatly increase the pedestrian & bicycle traffic on the trails – Estimate is 100K pedestrians annually.
 - Change the use pattern; Hopewell is the start of the trail, so current profile is predominantly people beginning a ride. With Maybrook, we will have through-travelers – without cars at their disposal - who will want services & hospitality.
- East Fishkill wants to capitalize on this pedestrian traffic - We want to provide links to enable people to leave the rail trails and visit restaurants and shops in the town.
- Increased pedestrian traffic will not only improve the business environment, but also add character and a sense of place to East Fishkill's hamlets.

fugetaboutit

Scene 2: The Three Zones

Task force was chartered to make recommendations for getting pedestrians to leave trail and visit hamlets.



Zone 2

Zone 1

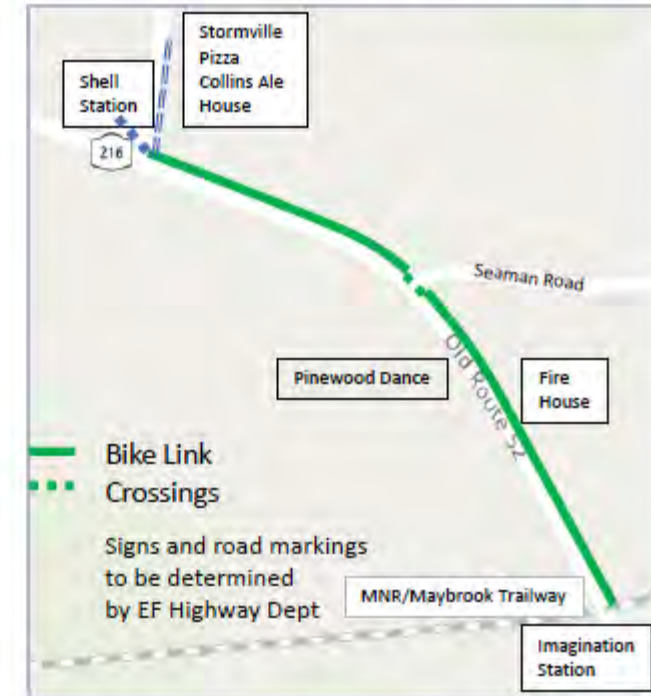
LeChambord at Curry Estate

Stormville Air
Antique Show and Fl
Temporarily cl

Stormville Hamlet

Path / Route	Landowners	Pros/Cons	Stakeholder Response
1. Old Rt 52 - Imagination Station to Shell Station. ¼ mi.	<ul style="list-style-type: none"> • Town EF – Old Rt 52 • NYS – Rt 216 	<ul style="list-style-type: none"> • Shortest route • Most control • Need NYSDOT for crosswalk • Lowest cost 	<ul style="list-style-type: none"> + Shell Deli-Mart + Stormville Pizza + Collins Ale House
2. Rt 216 from St Gregorios Church to Shell Station ½ mi.	<ul style="list-style-type: none"> • NYS - Rt 216 	<ul style="list-style-type: none"> • Longest Route • Greatest Cost • Least control 	See above
3. Tuckers farm path from Trailway to Farm Stand ¼ mi.	<ul style="list-style-type: none"> • Tucker • NYS – Rt 216 	<ul style="list-style-type: none"> • Smallest impact 	+ Farm Stand

Stormville Hamlet Preferred Route



Recommendation:

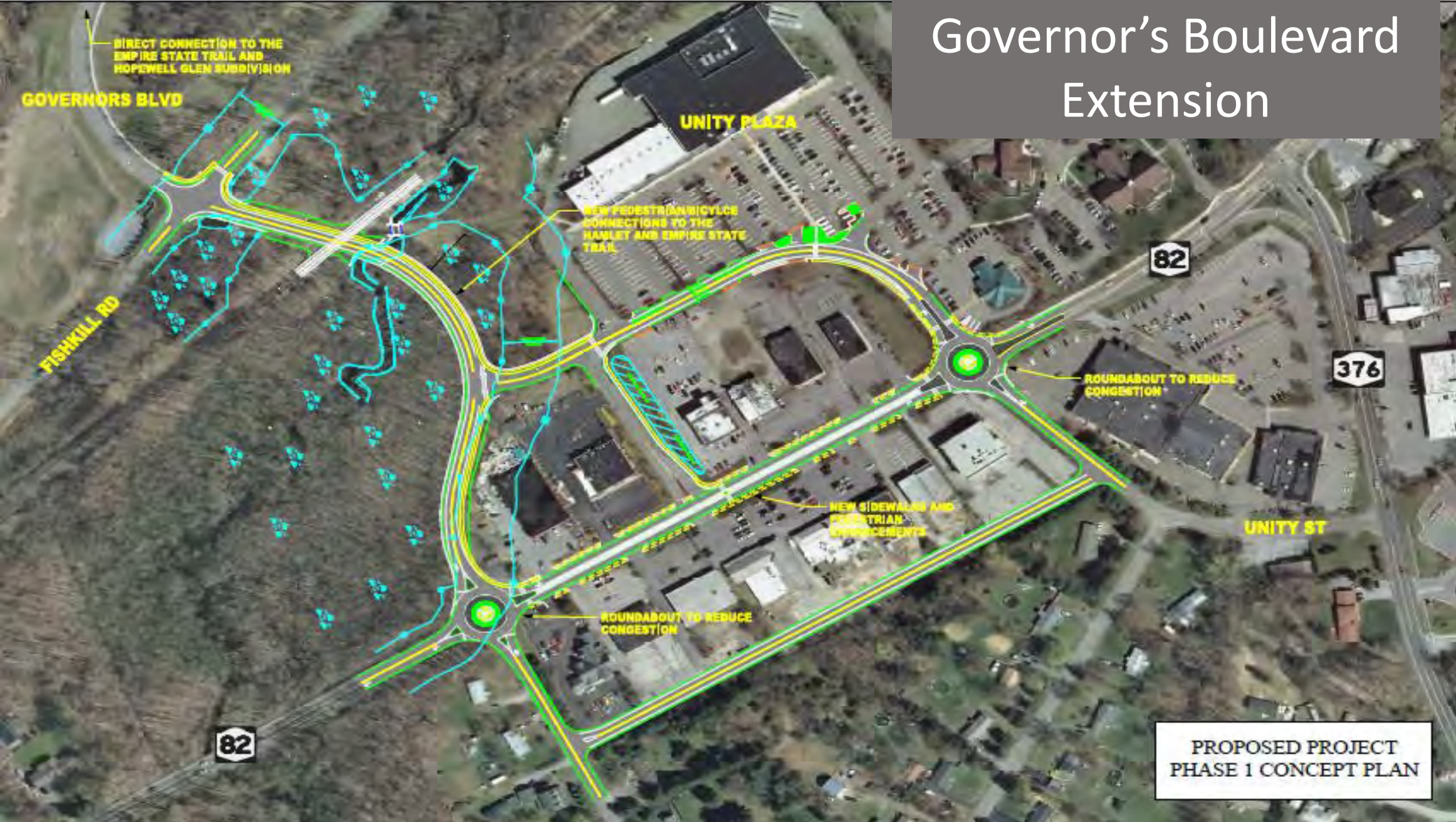
- Significant business interest
- Option 1. Old Rt 52 Path is recommended

*Consider improving the Shell station lot as bike path parking lot, sealing, picnic table, flower planter.

A Subplot – The Hopewell Hamlet Makeover

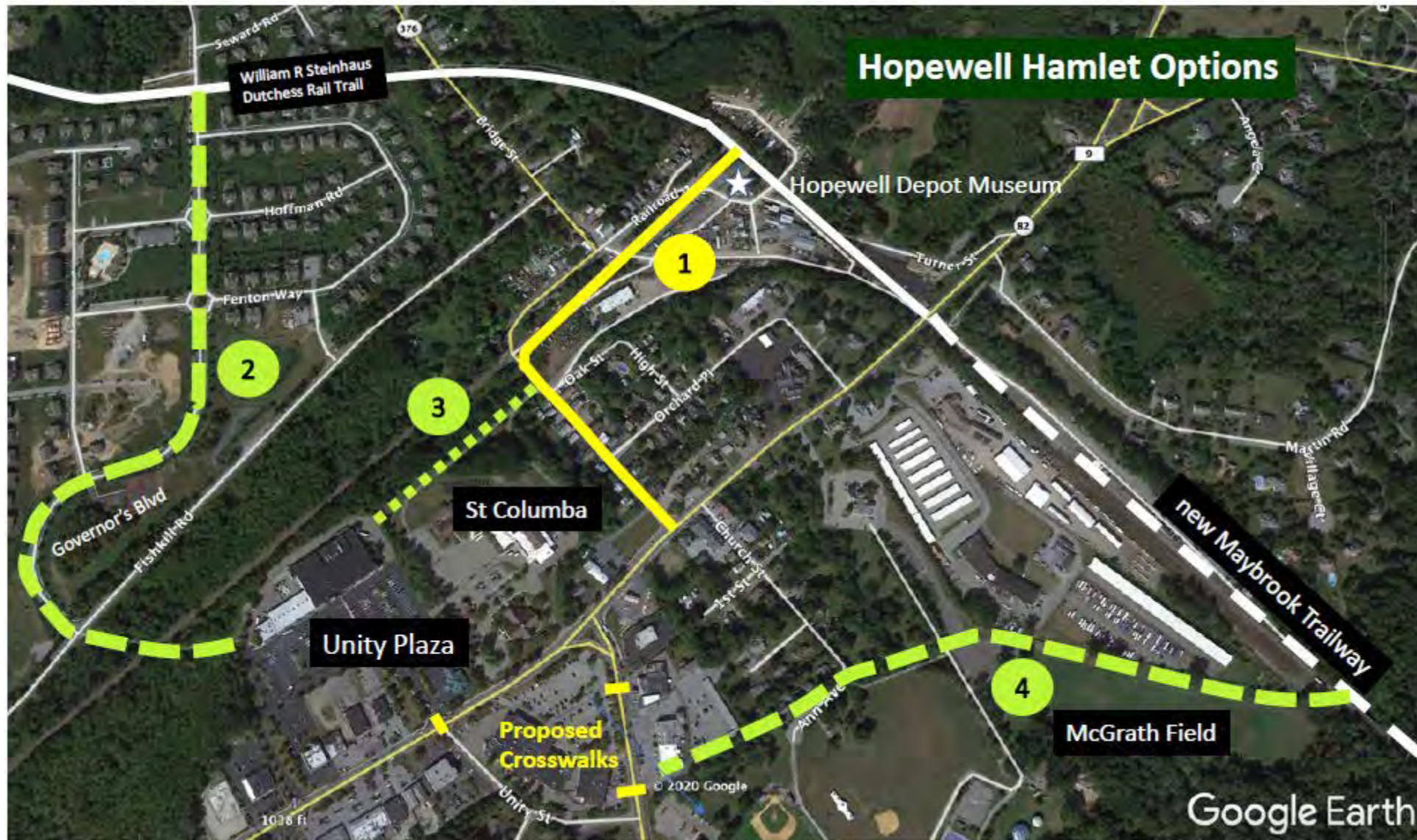
- Vision: Hopewell is currently a cluster of independent strip malls, with no sense of place. The town is seeking to revitalize the hamlet by improving and expanding walkability, pedestrian access to hamlet from Rail Trail, and overall circulation, making it a destination where people can stroll, shop and dine.
- Governor's Boulevard Extension w/ Roundabouts – (Chart 8)
 - Roundabouts to calm traffic and allow pedestrians to visit multiple places.
 - Direct link from 290-home Hopewell Glen, allowing residents to walk into the hamlet.

Governor's Boulevard Extension



Meanwhile, in a small village in Upstate New York...

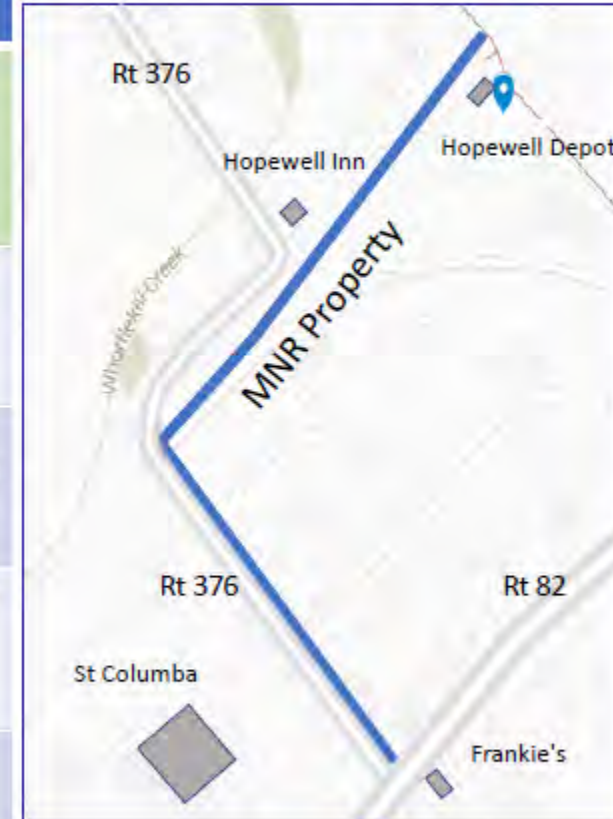
Act 1 –
Scene 5



Hopewell Hamlet

Path / Route	Landowners	Pros/Cons	Stakeholder Response
1. Depot to Metro North to Rt 376 to Rt 82 0.4 mi	<ul style="list-style-type: none"> • Metro North • NYS – Rt 376 	<ul style="list-style-type: none"> • Short Route • Included Historic 'Old Hopewell' • Needs MNR easement • Needs NYSDOT approval • Moderate cost 	<ul style="list-style-type: none"> + Metro North support + NYS DOT + Unity Plaza, Gasland, Tomi's Bites, ? Homeowners on Rt 376
2. Governors Blvd to Fishkill Rd to Unity Plaza 0.6 mi	<ul style="list-style-type: none"> • Hopewell Glen • Metro North • Unity Plaza 	<ul style="list-style-type: none"> • Longer Route • Sidewalk, low volume traffic • Bypasses 'Old Hopewell' • Lower cost 	<ul style="list-style-type: none"> + Unity Plaza - Strong opposition Hopewell Glen HOA
3. Depot to Rt 376 to St Columba to Unity Plaza 0.4 mi	<ul style="list-style-type: none"> • Metro North • NYS – Rt 376 • St Columba • Unity Plaza 	<ul style="list-style-type: none"> • Short Route • Bypasses 'Old Hopewell' • Moderate cost 	<ul style="list-style-type: none"> + Unity Plaza ? Expect St Columba/parent concerns, school & Stations of the Cross
4. Maybrook Trailway to EF Rec to Rt 376 0.8 mi	<ul style="list-style-type: none"> • Town EF 	<ul style="list-style-type: none"> • Long route , McGrath Field • MNR rail yard, berm, fence, ditch • Bypasses 'Old Hopewell' • Higher cost 	<ul style="list-style-type: none"> ? Expect sport team/parent concerns
Crosswalks	<ul style="list-style-type: none"> • NYS DOT 	<ul style="list-style-type: none"> • Support pedestrian traffic • Rt 82 - Unity Plaza • 1 or 2 Rt 376 - Near Unity Street 	<ul style="list-style-type: none"> • TBD

Hopewell Hamlet Preferred Route



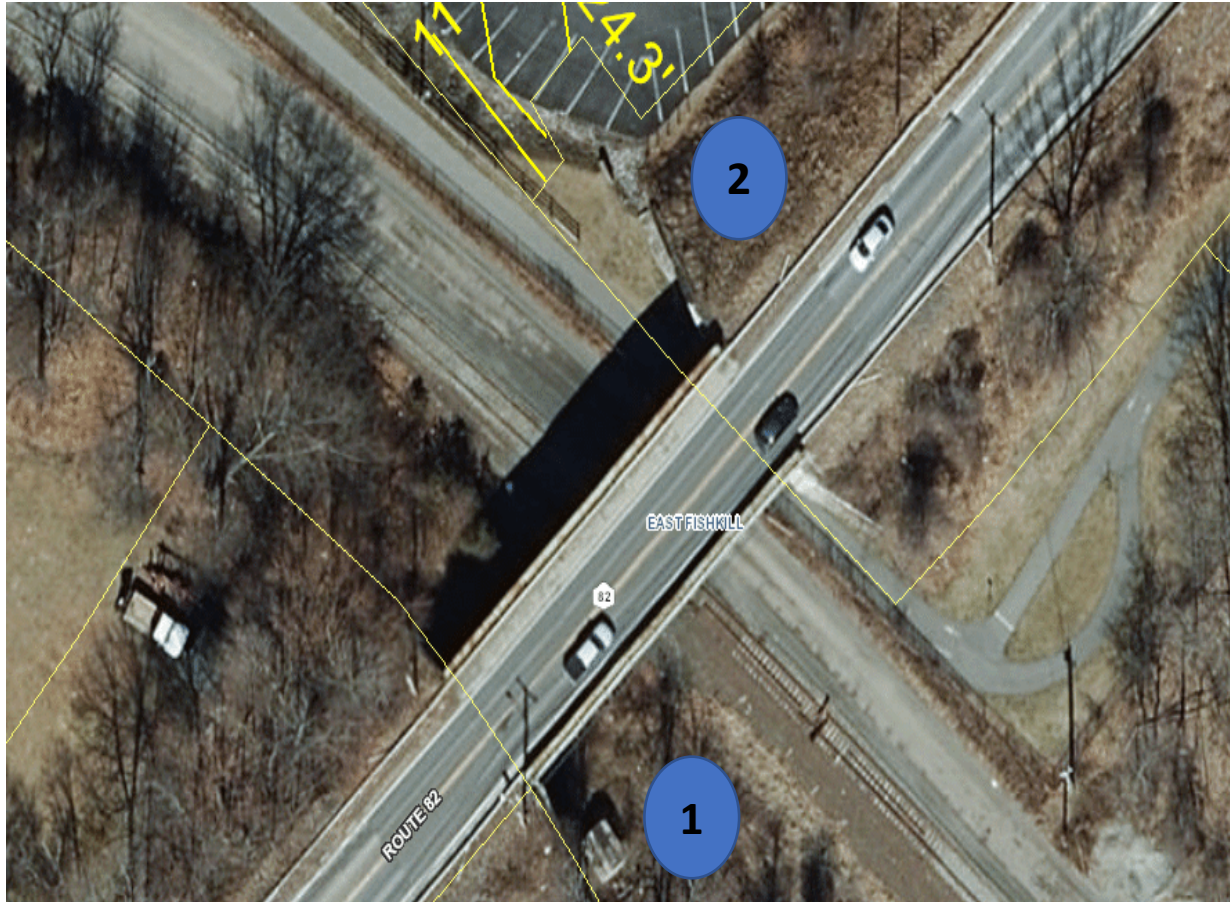
Recommendation

- Option 1, from Depot to Rt 82 is strategic, on public thoroughfares and has potential for state grants

Act 2 – Scene 1 – The Cataclysmic Event

- Route 82 Bridge Removal - **Bridge over the rail trail will not be replaced; Route 82 will cross the rail trail and tracks at grade.**
- East Fishkill is seeking: a new roundabout at Beekman Road and two pocket parks at the intersection that include: Benches, Water fountains (for both people and pets), Bike racks, a Bus stop, Signage highlighting history and local shopping and dining.
 - Potential: Rest rooms.
- Seeking grant money for: Parks & Sidewalks. But, NYS DOT design is at inception, so understanding what is in and out there is first step.

Route 82 Bridge Replacement



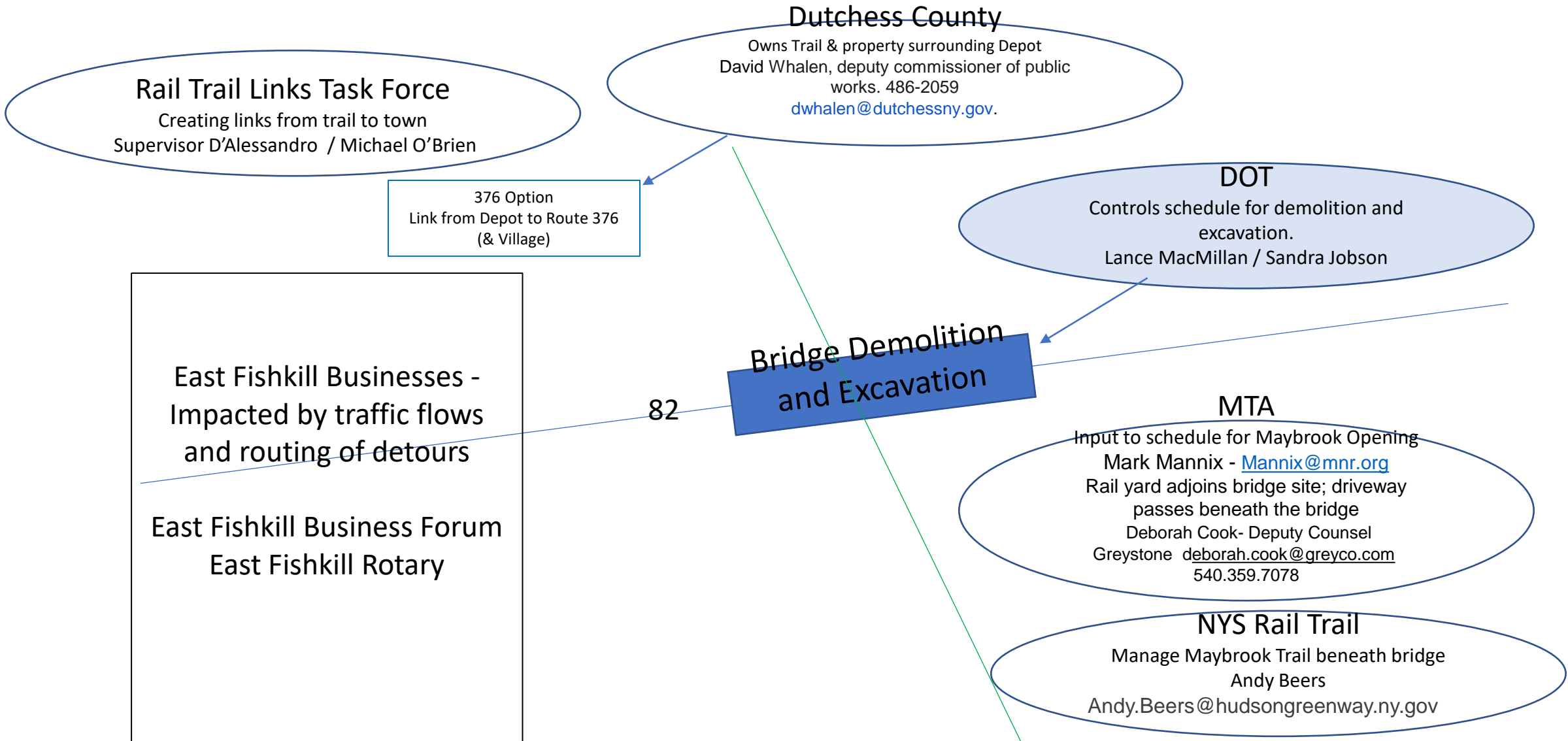
Streetscape Park

@ Intersection of 82 & Rail Trail.

- Sidewalks – on both sides of road
- Bicycle Racks
- Benches
- Signage
 - Historic
 - Nearby hamlet businesses
- Fountain – Drinking, bottle fill & pet trough
- Landscaping

- Ask: Park would be funded by grants & private donations (for signage). NYS DOT just starting the project . ng. We could also raise money by selling signage space.

Update: 12/23 discussion w/ Andy Beers (NYS Rail Trail) – “Our only directive at this point is to ensure there is a safe crossing for the public – be it a bridge, a crosswalk, or a light. ”



Route 82 Bridge Project Stakeholders

The Ask:

- How do we improve the Rail Trail as a commuter artery?...How do we get more people to use it to get to work?To go shopping?
- Bus connections?
- Connecting bike lanes?