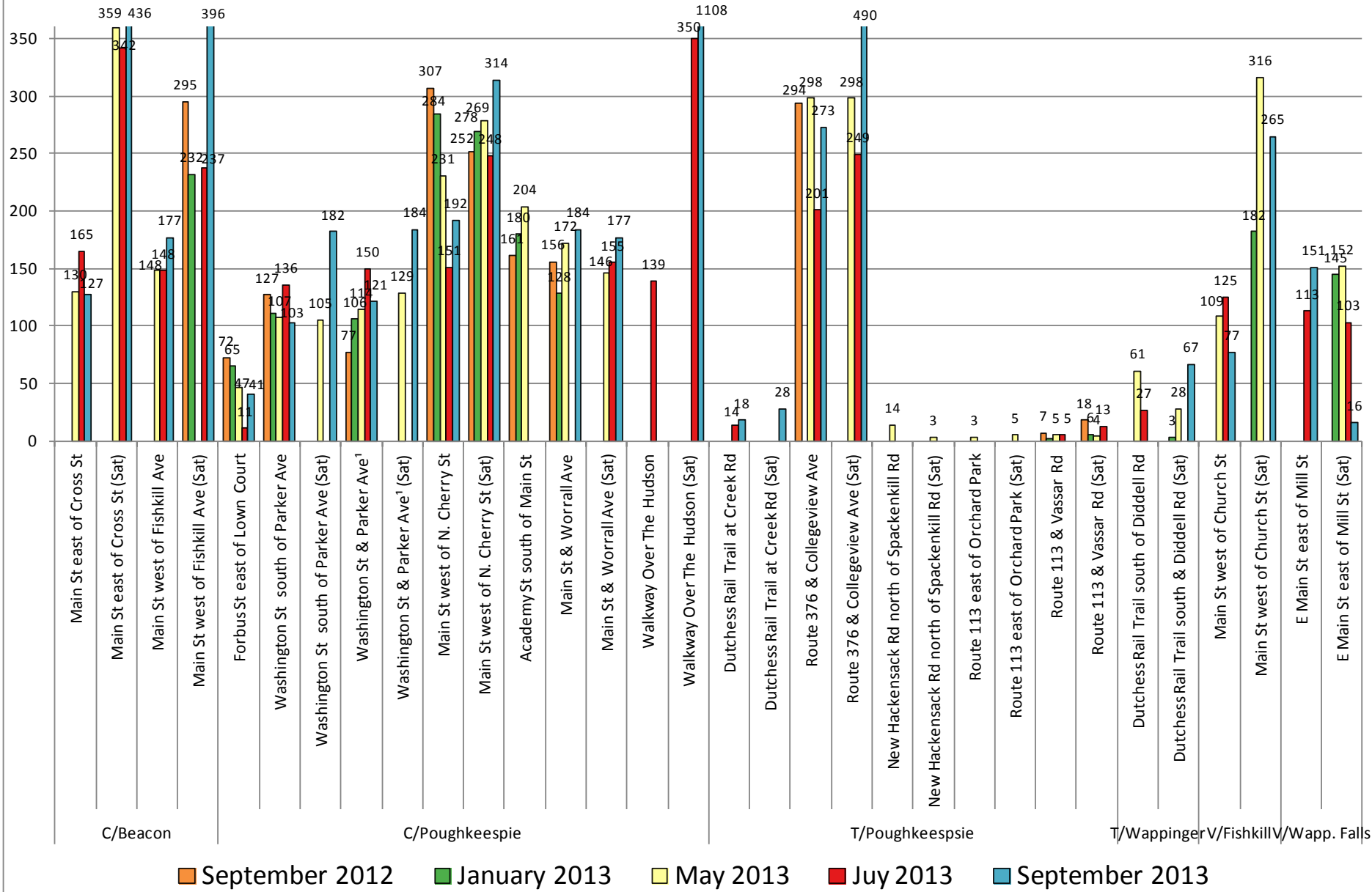


Appendix J

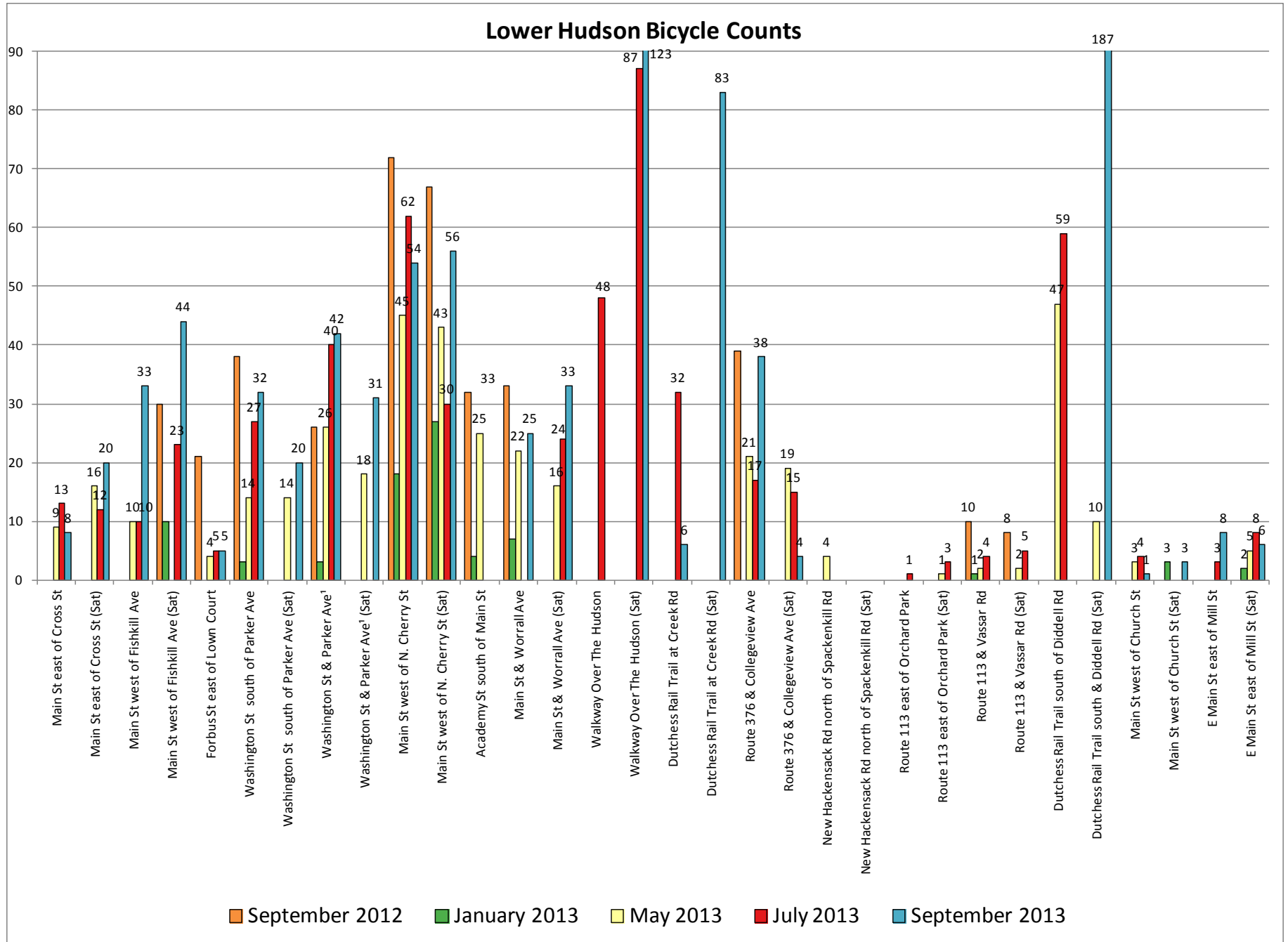
Pedestrian & Bicycle Counts: Lower Hudson																					
	Municipality	Location	Day	Time	September 2012			January 2013			May 2013			July 2013			September 2013			Avg. % Female	
					Ped	Bike	Total	Ped	Bike	Total	Ped	Bike	Total	Ped	Bike	Total	Ped	Bike	Total	Ped	Bike
SL	C/Beacon	Main St east of Cross St	Weekday	5-7pm	n/a	n/a	n/a	n/a	n/a	n/a	130	9	139	165	13	178	127	8	135	47%	20%
SL		Main St east of Cross St (Sat)	Weekend	12-2pm	n/a	n/a	n/a	n/a	n/a	n/a	359	16	375	342	12	354	436	20	456	57%	4%
SL		Main St west of Fishkill Ave	Weekday	5-7pm	n/a	n/a	n/a	n/a	n/a	n/a	148	10	158	148	10	158	177	33	210	37%	17%
SL		Main St west of Fishkill Ave (Sat)	Weekend	12-2pm	295	30	325	232	10	242	n/a	n/a	n/a	237	23	260	396	44	440	48%	22%
SL	C/Poughkeepsie	Forbus St east of Lown Court	Weekday	5-7pm	72	21	93	65	0	65	47	4	51	11	5	16	41	5	46	53%	14%
SL		Washington St south of Parker Ave	Weekday	5-7pm	127	38	165	111	3	114	107	14	121	136	27	163	103	32	135	39%	8%
SL		Washington St south of Parker Ave (Sat)	Weekend	12-2pm	n/a	n/a	n/a	n/a	n/a	n/a	105	14	119	n/a	n/a	n/a	182	20	202	41%	26%
Int		Washington St & Parker Ave ¹	Weekday	5-7pm	77	26	103	106	3	109	114	26	140	150	40	190	121	42	163	39%	11%
Int		Washington St & Parker Ave ¹ (Sat)	Weekend	12-2pm	n/a	n/a	n/a	n/a	n/a	n/a	129	18	147	n/a	n/a	n/a	184	31	215	55%	43%
SL		Main St west of N. Cherry St	Weekday	5-7pm	307	72	379	284	18	302	231	45	276	151	62	213	192	54	246	36%	4%
SL		Main St west of N. Cherry St (Sat)	Weekend	12-2pm	252	67	319	269	27	296	278	43	321	248	30	278	314	56	370	36%	4%
SL		Academy St south of Main St	Weekday	5-7pm	161	32	193	180	4	184	204	25	229	n/a	n/a	n/a	n/a	n/a	n/a	36%	7%
Int		Main St & Worrall Ave	Weekday	5-7pm	156	33	189	128	7	135	174	22	196	n/a	n/a	n/a	184	25	209	42%	16%
Int		Main St & Worrall Ave (Sat)	Weekend	12-2pm	n/a	n/a	n/a	n/a	n/a	n/a	146	16	162	155	24	179	177	33	210	43%	7%
SL		Smith St south of Creek Rd	Weekday	5-7pm	n/a	n/a	n/a	n/a	n/a	n/a	n/a	n/a	n/a	16	8	24	n/a	n/a	n/a	50%	0%
SL		Walkway Over The Hudson	Weekday	5-7pm	n/a	n/a	n/a	n/a	n/a	n/a	n/a	n/a	n/a	78	41	119	n/a	n/a	n/a	58%	27%
SL		Walkway Over The Hudson (Sat)	Weekend	12-2pm	n/a	n/a	n/a	n/a	n/a	n/a	n/a	n/a	n/a	350	87	437	1108	123	1231	55%	35%
SL	T/Poughkeepsie	Dutchess Rail Trail at Creek Rd	Weekday	5-7pm	n/a	n/a	n/a	n/a	n/a	n/a	n/a	n/a	n/a	14	32	46	18	6	24	47%	11%
SL		Dutchess Rail Trail at Creek Rd (Sat)	Weekend	12-2pm	n/a	n/a	n/a	n/a	n/a	n/a	n/a	n/a	n/a	n/a	n/a	n/a	28	83	111	43%	36%
Int		Route 376 & Collegeview Ave	Weekday	5-7pm	294	39	333	n/a	n/a	n/a	298	21	319	201	17	218	273	38	311	53%	23%
Int		Route 376 & Collegeview Ave (Sat)	Weekend	12-2pm	n/a	n/a	n/a	n/a	n/a	n/a	298	19	317	249	15	264	490	4	494	52%	18%
Int		Route 376 & College Ave	Weekday	5-7pm	n/a	n/a	n/a	19	3	22	n/a	n/a	n/a	n/a	n/a	n/a	0	0	0	58%	0%
SL		College Ave east of Dean's Lane	Weekday	5-7pm	n/a	n/a	n/a	n/a	n/a	n/a	n/a	n/a	n/a	14	18	32	25	21	46	54%	18%
Int		Route 9 & Vassar Rd	Weekday	5-7pm	n/a	n/a	n/a	n/a	n/a	n/a	n/a	n/a	n/a	8	4	12	n/a	n/a	n/a	13%	0%
SL		New Hackensack Rd north of Spackenkill Rd	Weekday	5-7pm	n/a	n/a	n/a	n/a	n/a	n/a	14	4	18	n/a	n/a	n/a	n/a	n/a	n/a	21%	0%
SL		New Hackensack Rd north of Spackenkill Rd	Weekend	12-2pm	n/a	n/a	n/a	n/a	n/a	n/a	3	0	3	n/a	n/a	n/a	n/a	n/a	n/a	100%	n/a
SL		Route 113 east of Orchard Park	Weekend	12-2pm	n/a	n/a	n/a	n/a	n/a	n/a	3	0	3	0	1	1	n/a	n/a	n/a	67%	0%
SL		Route 113 east of Orchard Park (Sat)	Weekend	12-2pm	n/a	n/a	n/a	n/a	n/a	n/a	5	1	6	0	3	3	n/a	n/a	n/a	40%	0%
Int		Fairmont Ave & Lagrange Ave	Weekday	5-7pm	53	14	67	60	3	63	74	9	83	18	19	37	61	22	83	36%	28%
SL		Hooker Ave east of Austin Court	Weekday	5-7pm	n/a	n/a	n/a	n/a	n/a	n/a	n/a	n/a	n/a	n/a	n/a	n/a	29	18	47	45%	22%
Int		Route 113 & Vassar Rd	Weekday	5-7pm	7	10	17	2	1	3	5	2	7	5	4	9	n/a	n/a	n/a	21%	6%
Int		Route 113 & Vassar Rd (Sat)	Weekend	12-2pm	18	8	26	6	0	6	4	2	6	13	5	18	n/a	n/a	n/a	46%	47%
SL	T/Wappinger	Dutchess Rail Trail south of Diddell Rd	Weekday	5-7pm	n/a	n/a	n/a	n/a	n/a	n/a	61	47	108	27	59	86	n/a	n/a	n/a	42%	30%
SL		Dutchess Rail Trail south of Diddell Rd (Sat)	Weekend	12-2pm	n/a	n/a	n/a	3	0	3	28	10	38	n/a	n/a	n/a	67	187	254	48%	41%
Int		Dutchess Rail Trail & Diddell Rd	Weekend	12-2pm ²	53	176	229	n/a	n/a	n/a	n/a	n/a	n/a	n/a	n/a	n/a	n/a	n/a	n/a	53%	41%
SL	V/Fishkill	Main St west of Church St	Weekday	5-7pm	n/a	n/a	n/a	n/a	n/a	n/a	109	3	112	125	4	129	77	1	78	46%	0%
SL		Main St west of Church St (Sat)	Weekend	12-2pm	295	2	297	182	3	185	316	0	316	n/a	n/a	n/a	265	3	268	53%	7%
SL		Main St west of Jackson St	Weekday	5-7pm	16	6	22	n/a	n/a	n/a	n/a	n/a	n/a	n/a	n/a	n/a	n/a	n/a	n/a	6%	0%
SL	V/Wapp. Falls	E Main St east of Mill St	Weekday	5-7pm	n/a	n/a	n/a	n/a	n/a	n/a	n/a	n/a	n/a	113	3	116	151	8	159	42%	45%
SL		E Main St east of Mill St (Sat)	Weekend	12-2pm	n/a	n/a	n/a	145	2	147	152	5	157	103	8	111	16	6	22	42%	10%

*SL = Screenline; Int = Intersection. ¹Counted as 3 legs in September, but 4 legs in January and May. ²3-5pm in September

Lower Hudson Pedestrian Counts



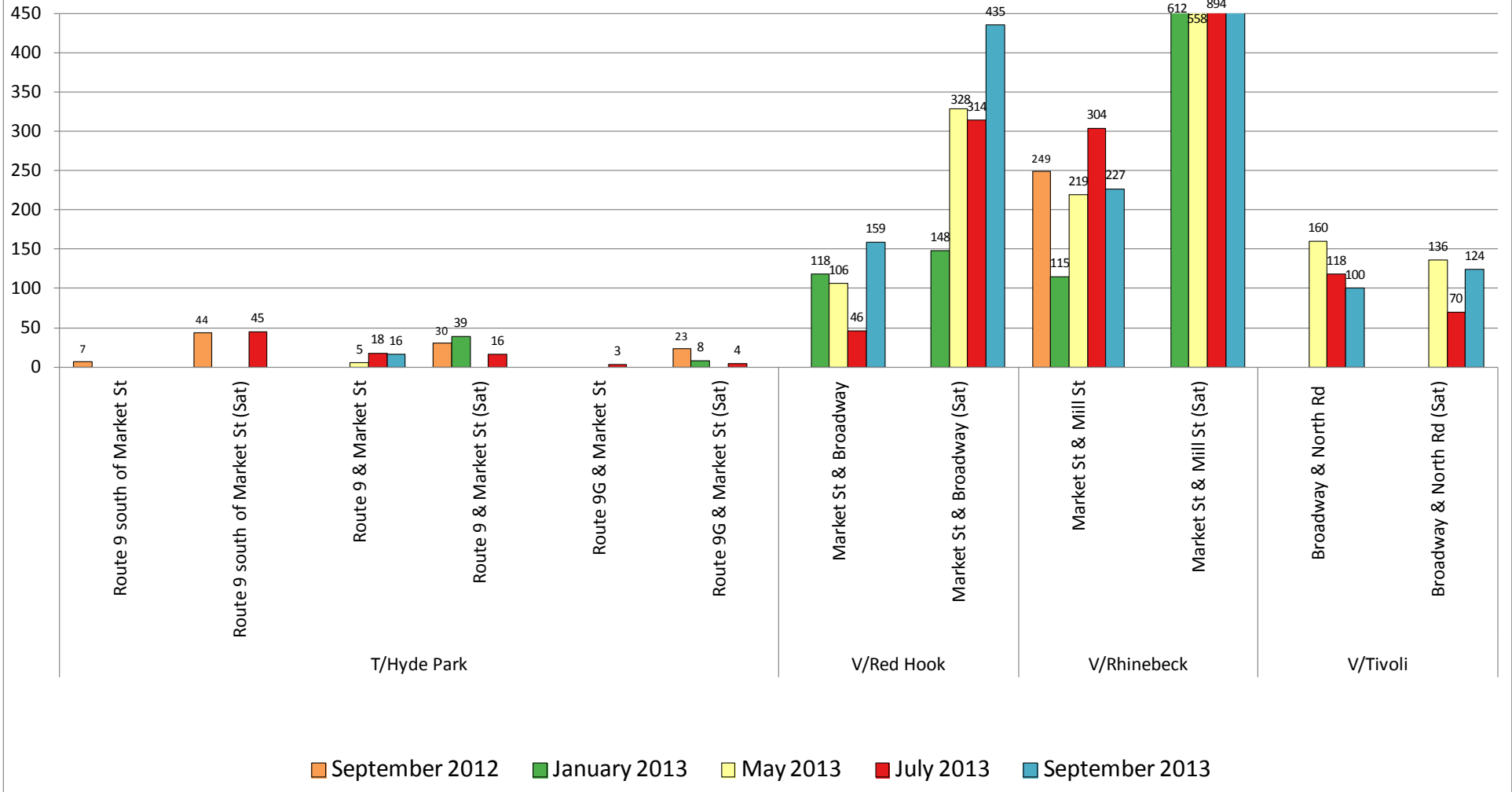
Lower Hudson Bicycle Counts



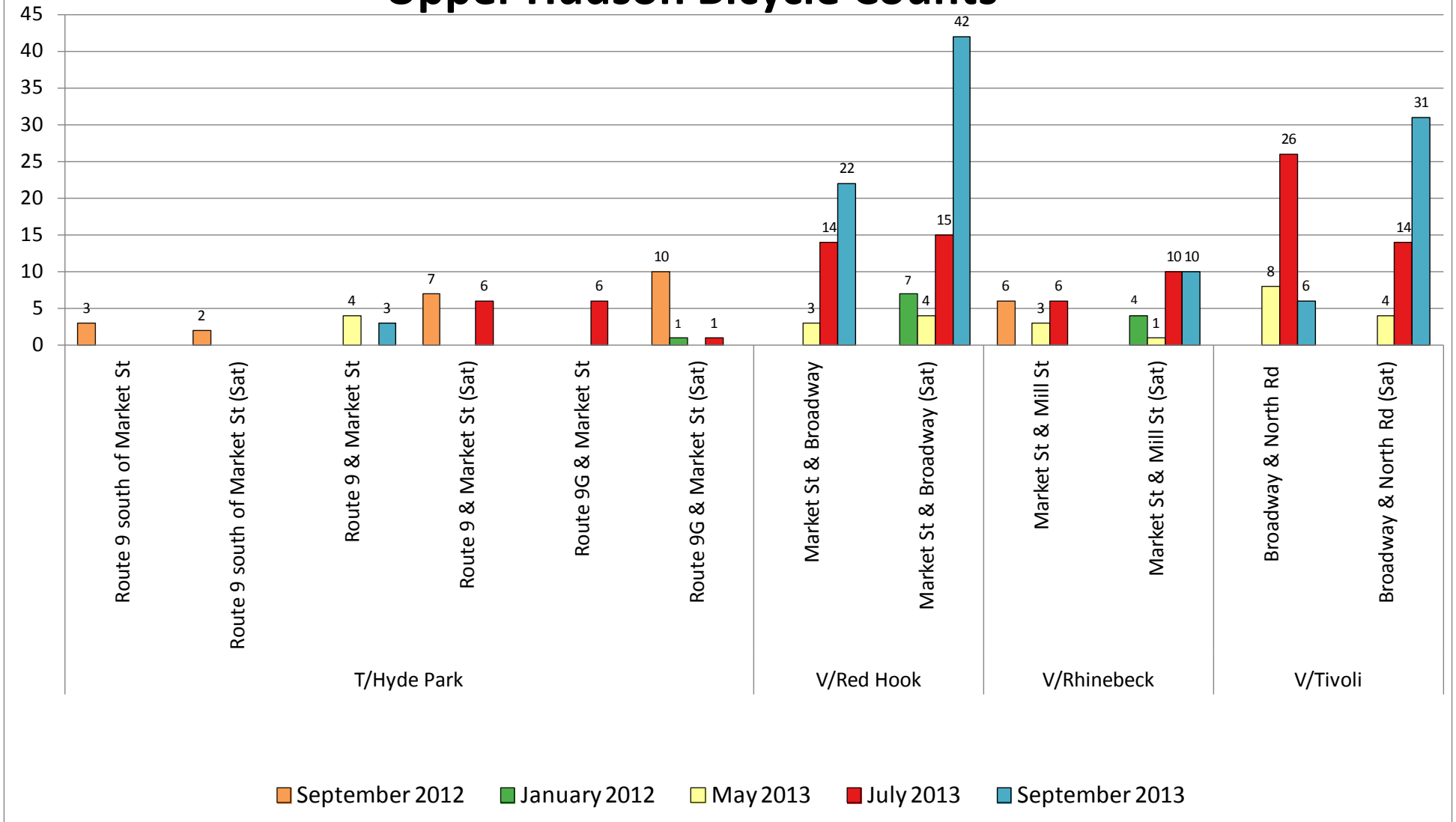
Pedestrian and Bicycle Counts: Upper Hudson																						
					September 2012			January 2013			May 2013			July 2013			September 2013			Avg. % Female		
Type*	Municipality	Location	Day	Time	Ped	Bike	Total	Ped	Bike	Total	Ped	Bike	Total	Ped	Bike	Total	Ped	Bike	Total	Ped	Bike	
SL	T/Hyde Park	Route 9 south of Market St	Weekday	5-7pm	7	3	10	n/a	n/a	n/a	n/a	n/a	n/a	n/a	n/a	n/a	n/a	n/a	n/a	29%	67%	
SL		Route 9 south of Market St (Sat)	Weekend	12-2pm	44	2	46	n/a	n/a	n/a	n/a	n/a	n/a	45	0	45	n/a	n/a	n/a	53%	0%	
Int		Route 9 & Market St	Weekday	5-7pm	n/a	n/a	n/a	n/a	n/a	n/a	5	4	9	18	0	18	16	3	19	59%	0%	
Int		Route 9 & Market St (Sat)	Weekend	12-2pm	30	7	37	39	0	39	n/a	n/a	n/a	16	6	22	n/a	n/a	n/a	47%	8%	
Int		Route 9G & Market St	Weekday	5-7pm	n/a	n/a	n/a	n/a	n/a	n/a	n/a	n/a	n/a	3	6	9	n/a	n/a	n/a	0%	33%	
Int		Route 9G & Market St (Sat)	Weekend	12-2pm	23	10	33	8	1	9	n/a	n/a	n/a	4	1	5	n/a	n/a	n/a	69%	58%	
Int	V/Red Hook	Market St & Broadway	Weekday	5-7pm	n/a	n/a	n/a	118	0	118	106	3	109	46	14	60	159	22	181	52%	23%	
Int		Market St & Broadway (Sat)	Weekend	12-2pm	n/a	n/a	n/a	148	7	155	328	4	332	314	15	329	435	42	477	47%	13%	
Int	V/Rhinebeck	Market St & Mill St	Weekday	5-7pm	249	6	255	115	0	115	219	3	222	304	6	310	227	0	227	52%	0%	
Int		Market St & Mill St (Sat)	Weekend	12-2pm	n/a	n/a	n/a	612	4	616	558	1	559	894	10	904	959	10	969	54%	20%	
Int	V/Tivoli	Broadway & North Rd	Weekday	5-7pm	n/a	n/a	n/a	n/a	n/a	n/a	160	8	168	118	26	144	100	6	106	48%	38%	
Int		Broadway & North Rd (Sat)	Weekend	12-2pm	n/a	n/a	n/a	n/a	n/a	n/a	136	4	140	70	14	84	124	31	155	49%	29%	

*SL = Screenline; Int = Intersection.

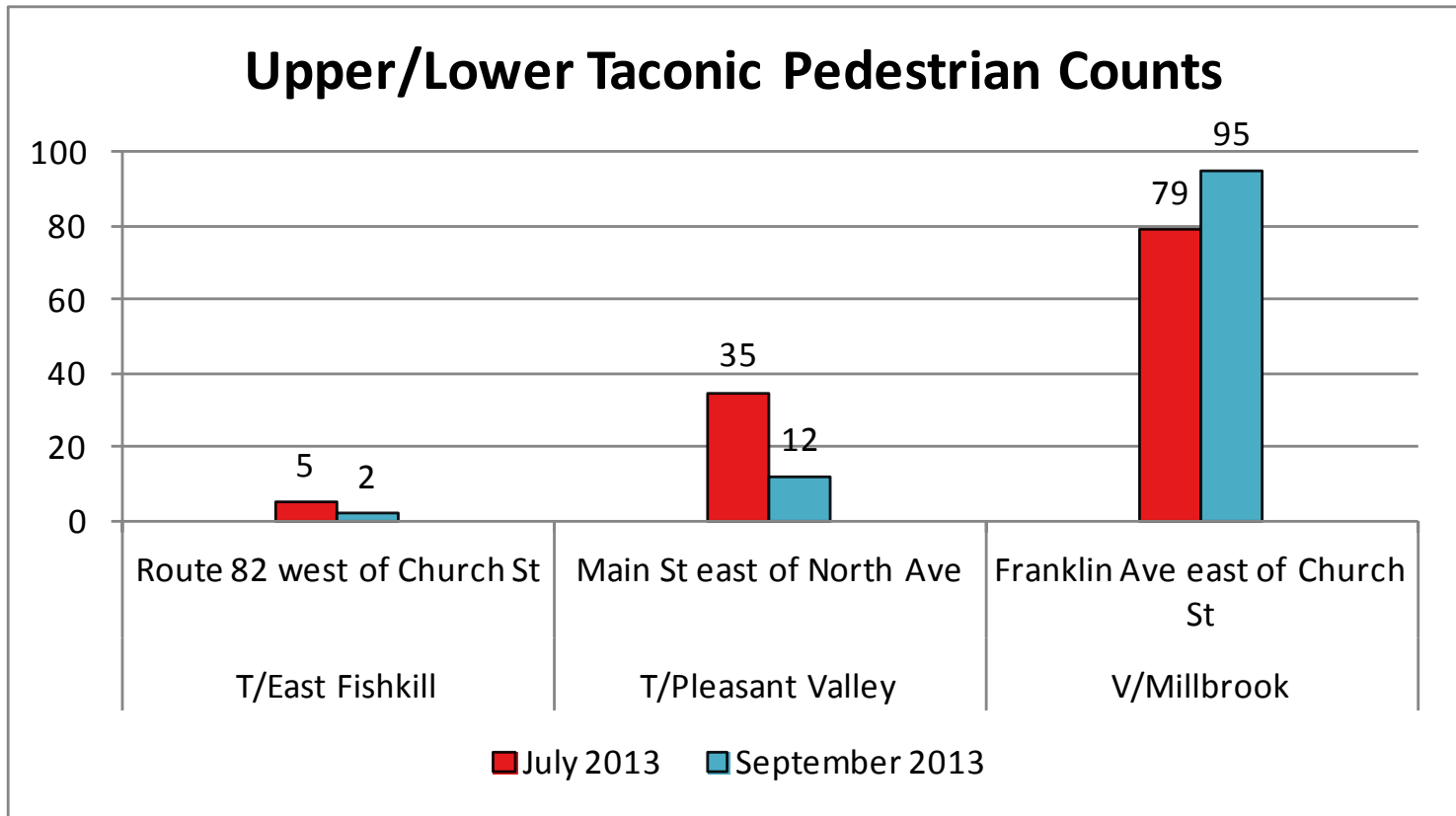
Upper Hudson Pedestrian Counts



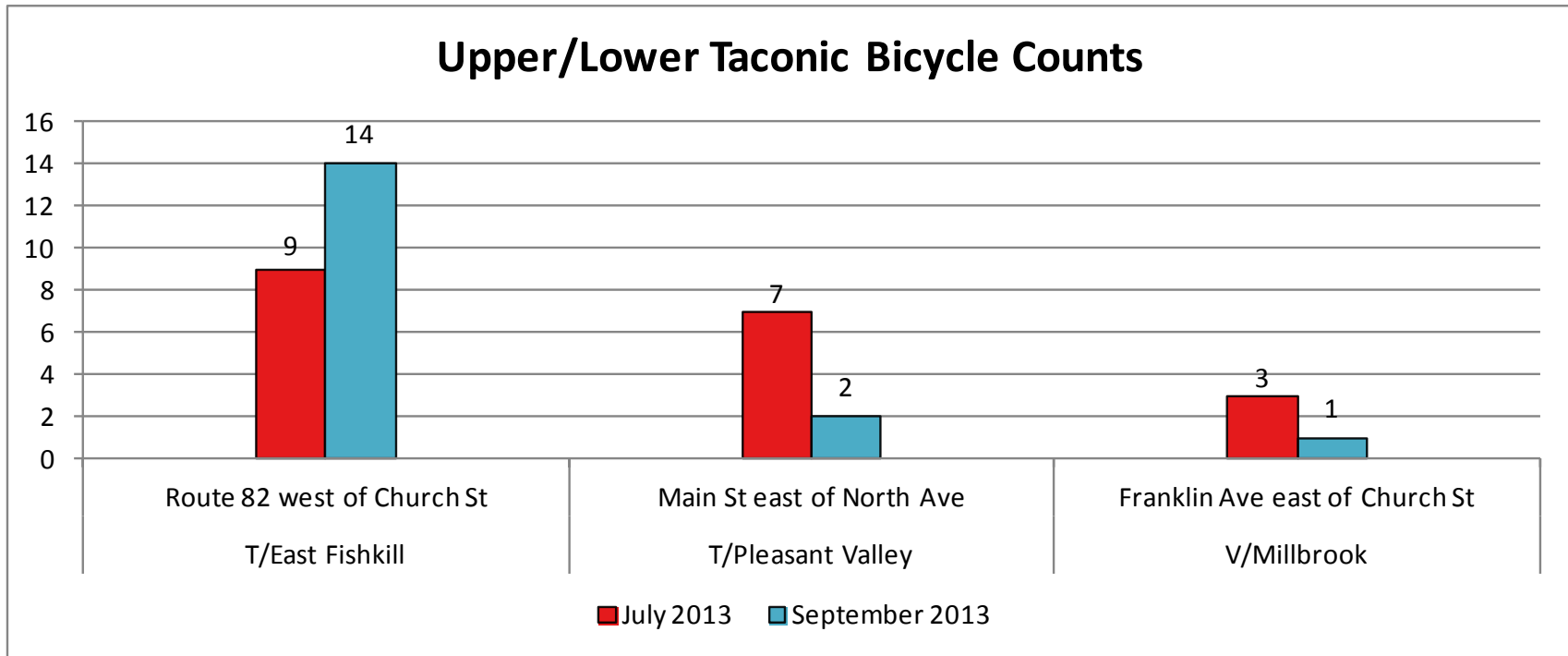
Upper Hudson Bicycle Counts



Pedestrian and Bicycle Counts: Upper and Lower Taconic												
					July 2013			September 2013			Avg. % Female	
Type*	Municipality	Location	Day	Time	Ped	Bike	Total	Ped	Bike	Total	Ped	Bike
SL	T/East Fishkill	Route 82 west of Church St	Weekday	5-7pm	5	9	14	2	14	16	0%	0%
SL	T/Pleasant Valley	Main St east of North Ave	Weekday	5-7pm	35	7	42	12	2	14	62%	0%
SL	V/Millbrook	Franklin Ave east of Church St	Weekday	5-7pm	79	3	82	95	1	96	53%	50%
*SL=Screenline; Int= Intersection												



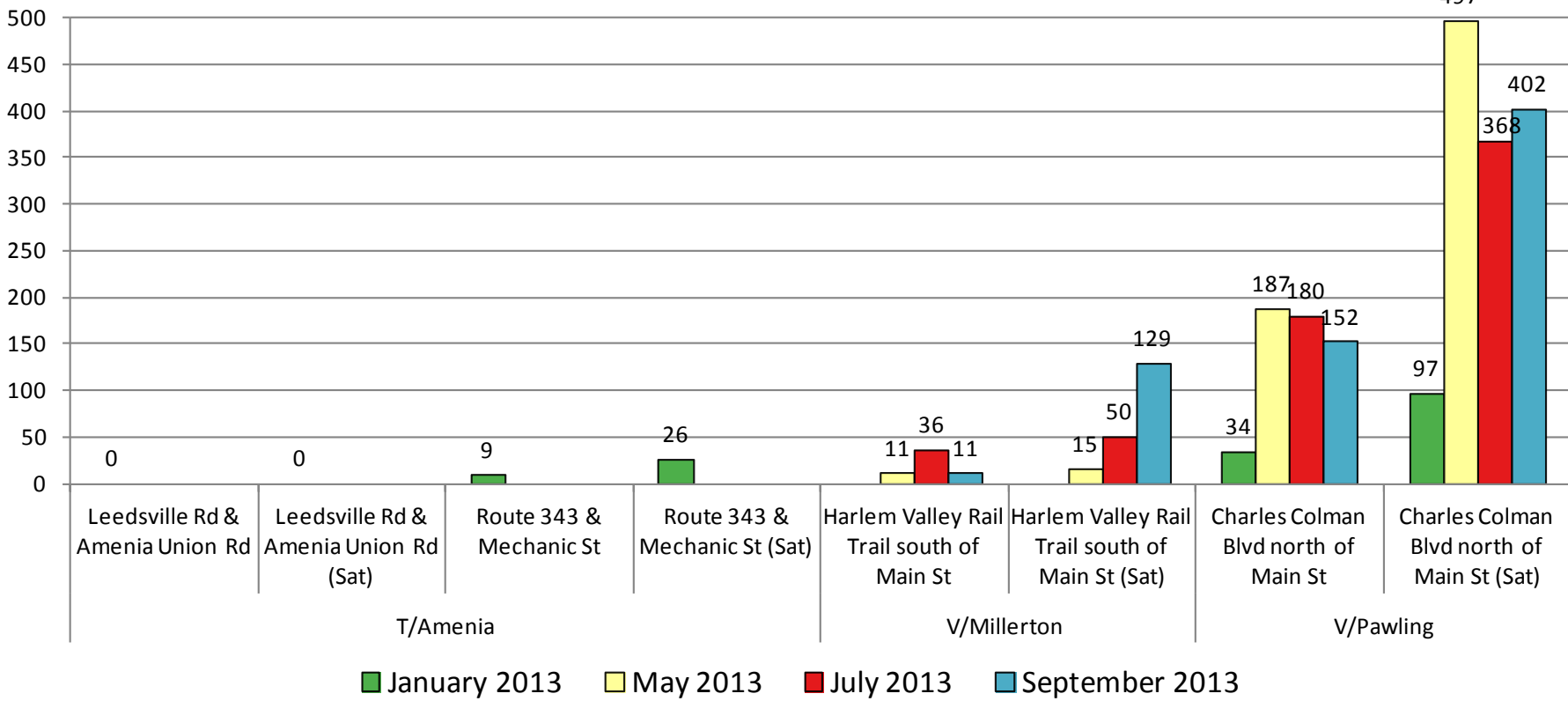
Upper/Lower Taconic Bicycle Counts



Pedestrian & Bicycle Counts: Harlem Valley																						
					September 2012			January 2013			May 2013			July 2013			September 2013			Avg. % Female		
Type*	Municipality	Location	Day	Time	Ped	Bike	Total	Ped	Bike	Total	Ped	Bike	Total	Ped	Bike	Total	Ped	Bike	Total	Ped	Bike	
Int	T/Amenia	Leedsville Rd & Amenia Union Rd	Weekday	5-7pm	n/a	n/a	n/a	0	0	0	n/a	n/a	n/a	n/a	n/a	n/a	n/a	n/a	n/a	n/a	n/a	
Int		Leedsville Rd & Amenia Union Rd (Sat)	Weekend	12-2pm	n/a	n/a	n/a	0	1	1	n/a	n/a	n/a	n/a	n/a	n/a	n/a	n/a	n/a	n/a	0%	
Int		Route 343 & Mechanic St	Weekday	5-7pm	n/a	n/a	n/a	9	0	9	n/a	n/a	n/a	n/a	n/a	n/a	n/a	n/a	n/a	n/a	22%	
Int		Route 343 & Mechanic St (Sat)	Weekend	12-2pm	n/a	n/a	n/a	26	2	28	n/a	n/a	n/a	n/a	n/a	n/a	n/a	n/a	n/a	n/a	42%	
SL	V/Millerton	Harlem Valley Rail Trail south of Main St	Weekday	5-7pm	n/a	n/a	n/a	n/a	n/a	n/a	11	5	16	36	22	58	11	15	26	57%	26%	
SL		Harlem Valley Rail Trail south of Main St (Sat)	Weekend	12-2pm	n/a	n/a	n/a	n/a	n/a	n/a	15	2	17	50	24	74	129	123	252	54%	51%	
SL		Route 44 east of Dutchess Ave	Weekday	5-7pm	n/a	n/a	n/a	n/a	n/a	n/a	67	9	76	n/a	n/a	n/a	n/a	n/a	n/a	n/a	46%	
SL	V/Pawling	East Main St east of Charles Colman Blvd	Weekday	5-7pm	n/a	n/a	n/a	n/a	n/a	n/a	106	3	109	n/a	n/a	n/a	n/a	n/a	n/a	n/a	41%	
SL		Charles Colman Blvd north of Main St	Weekday	5-7pm	n/a	n/a	n/a	34	0	34	187	2	189	180	9	189	152	10	162	56%		
SL		Charles Colman Blvd north of Main St (Sat)	Weekend	12-2pm	n/a	n/a	n/a	97	0	97	497	3	500	368	10	378	402	1	403	55%		

*SL = Screenline; Int = Intersection.

Harlem Valley Pedestrian Counts



Harlem Valley Bicycle Counts

