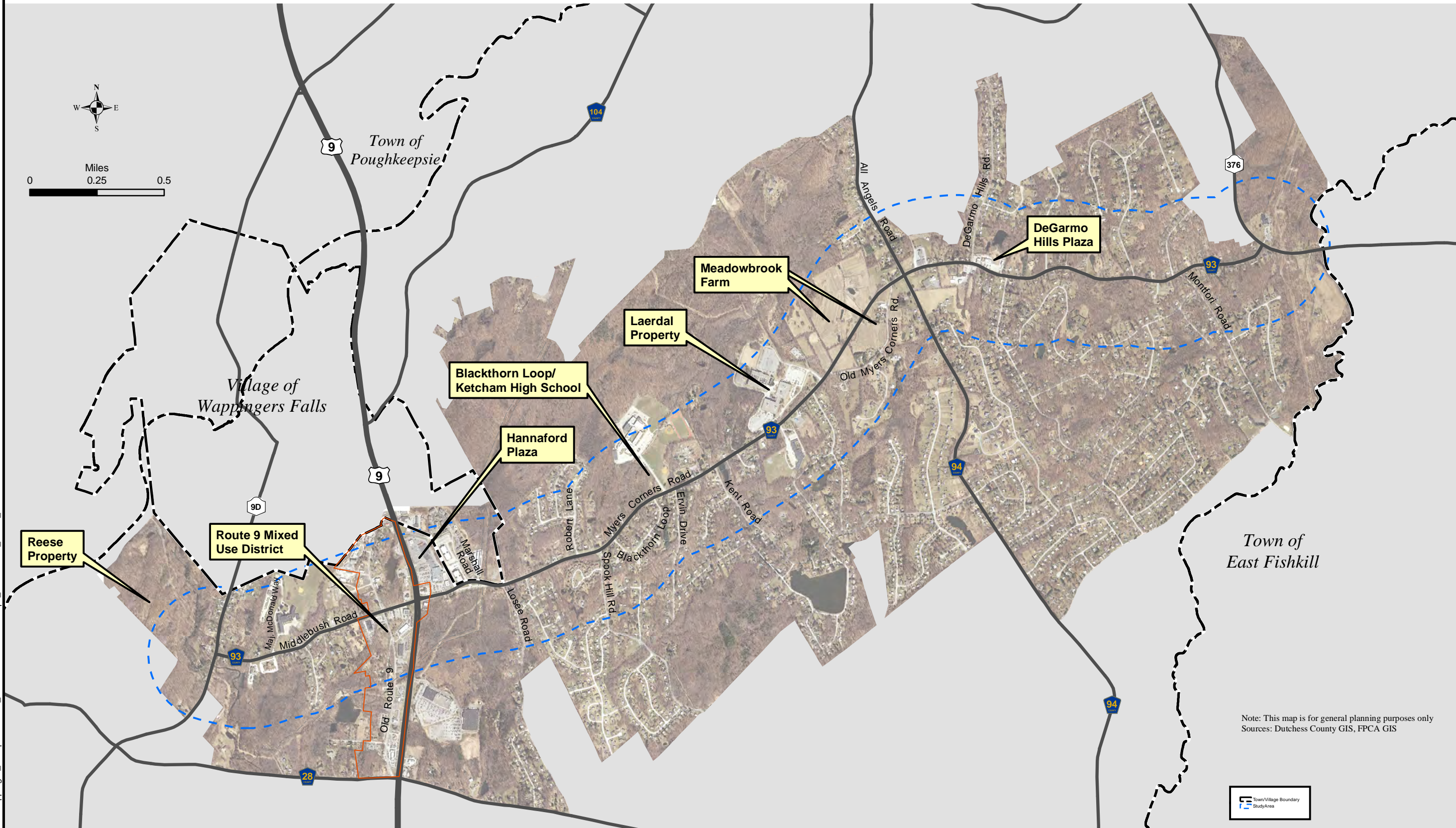


Land Use and Zoning Strategies Location Map



Note: This map is for general planning purposes only
Sources: Dutchess County GIS, FPCA GIS

File: P:\Projects\500\Wappinger_Comprehensive_Plan\CR93\RevisedMaps_8x11\CR93_Task4_11x17.mxd



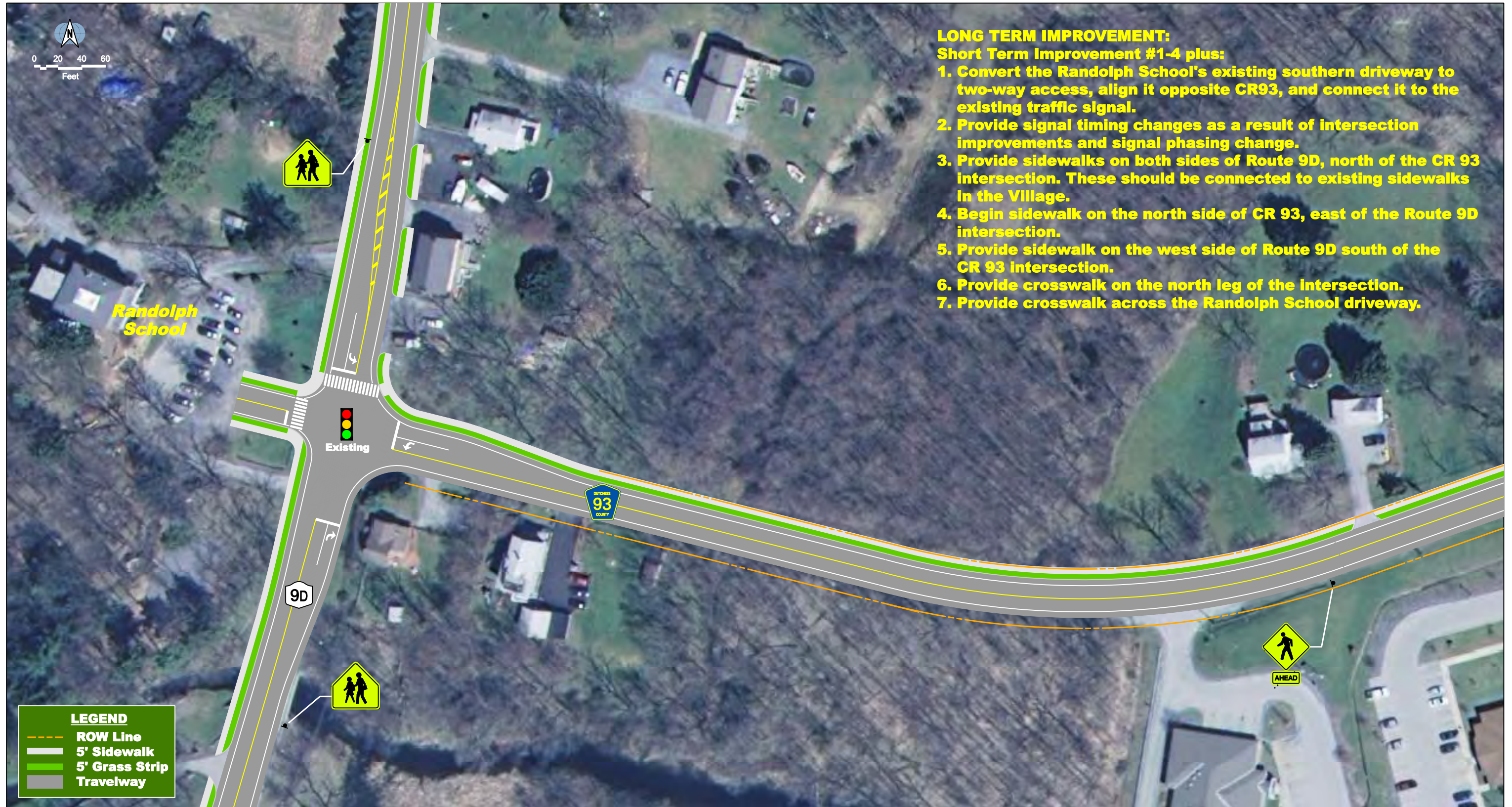
FREDERICK P. CLARK ASSOCIATES, INC.



Figure 2.1



**SHORT TERM IMPROVEMENT STRATEGY
 CR 93 AND ROUTE 9D**



**LONG TERM IMPROVEMENT STRATEGY
 CR 93 AND ROUTE 9D**



**SHORT TERM IMPROVEMENT STRATEGY
CR 93 AND MAJOR MACDONALD WAY**

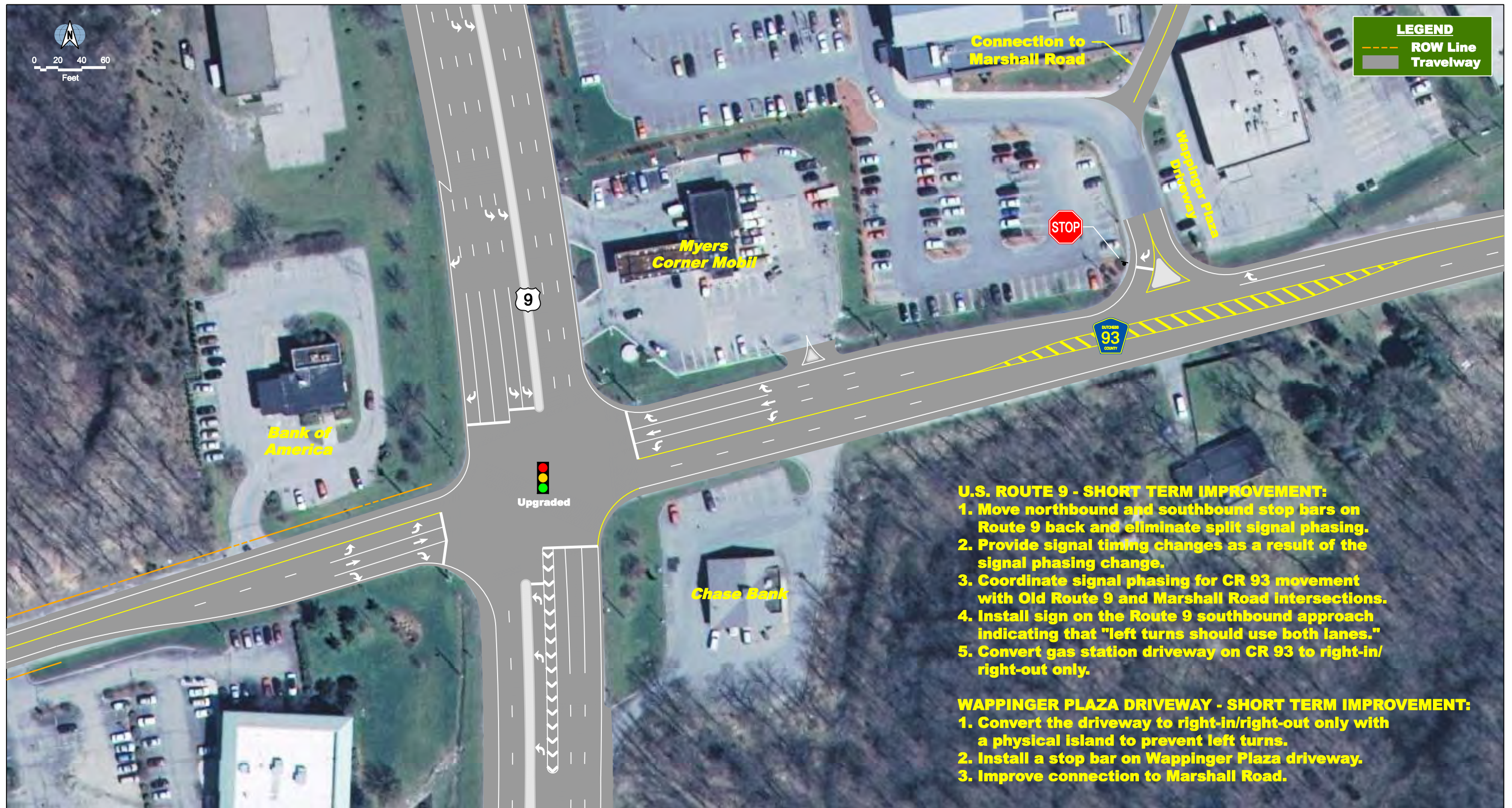




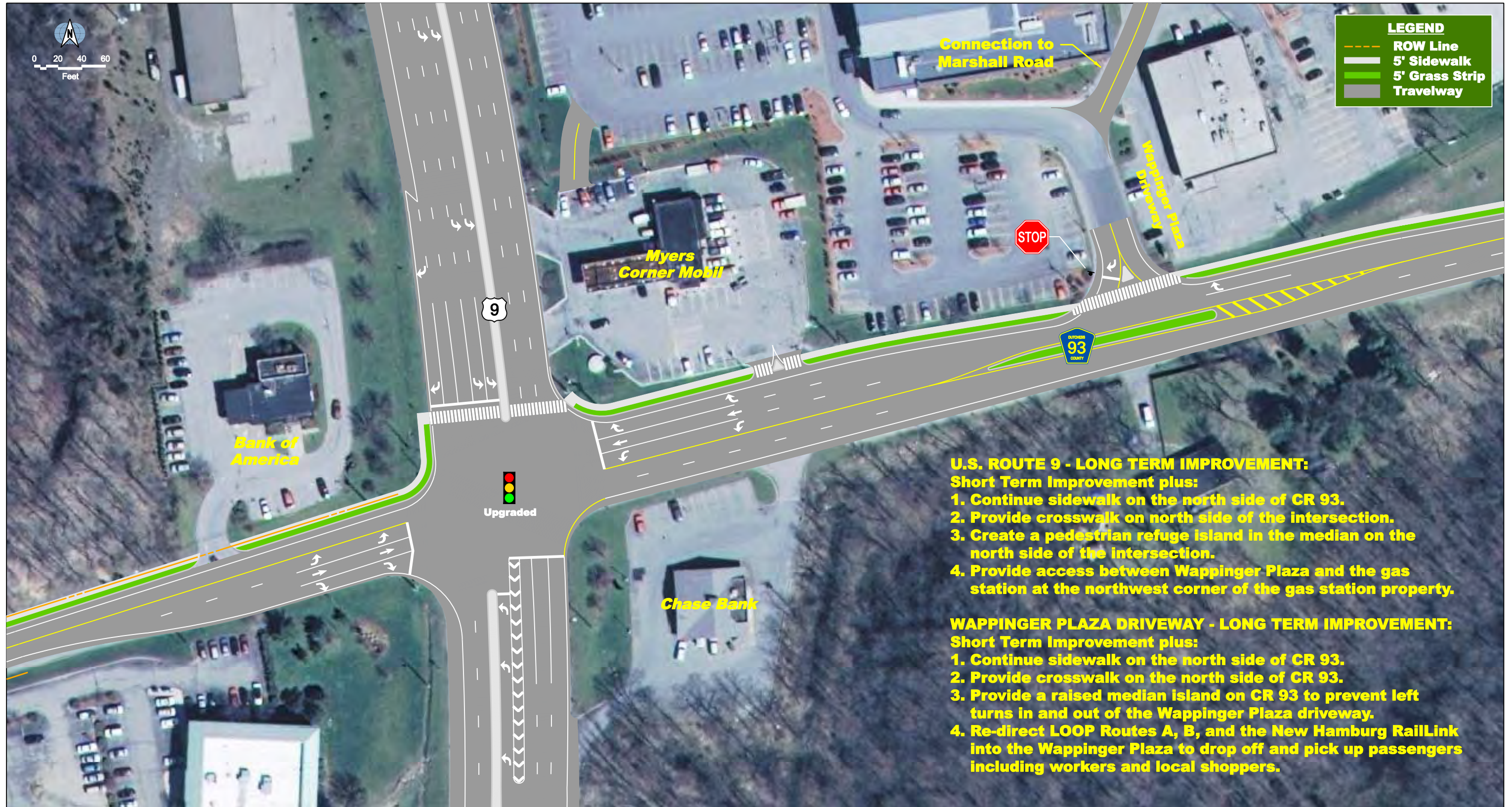
**SHORT TERM IMPROVEMENT STRATEGY
CR 93 AND OLD ROUTE 9**

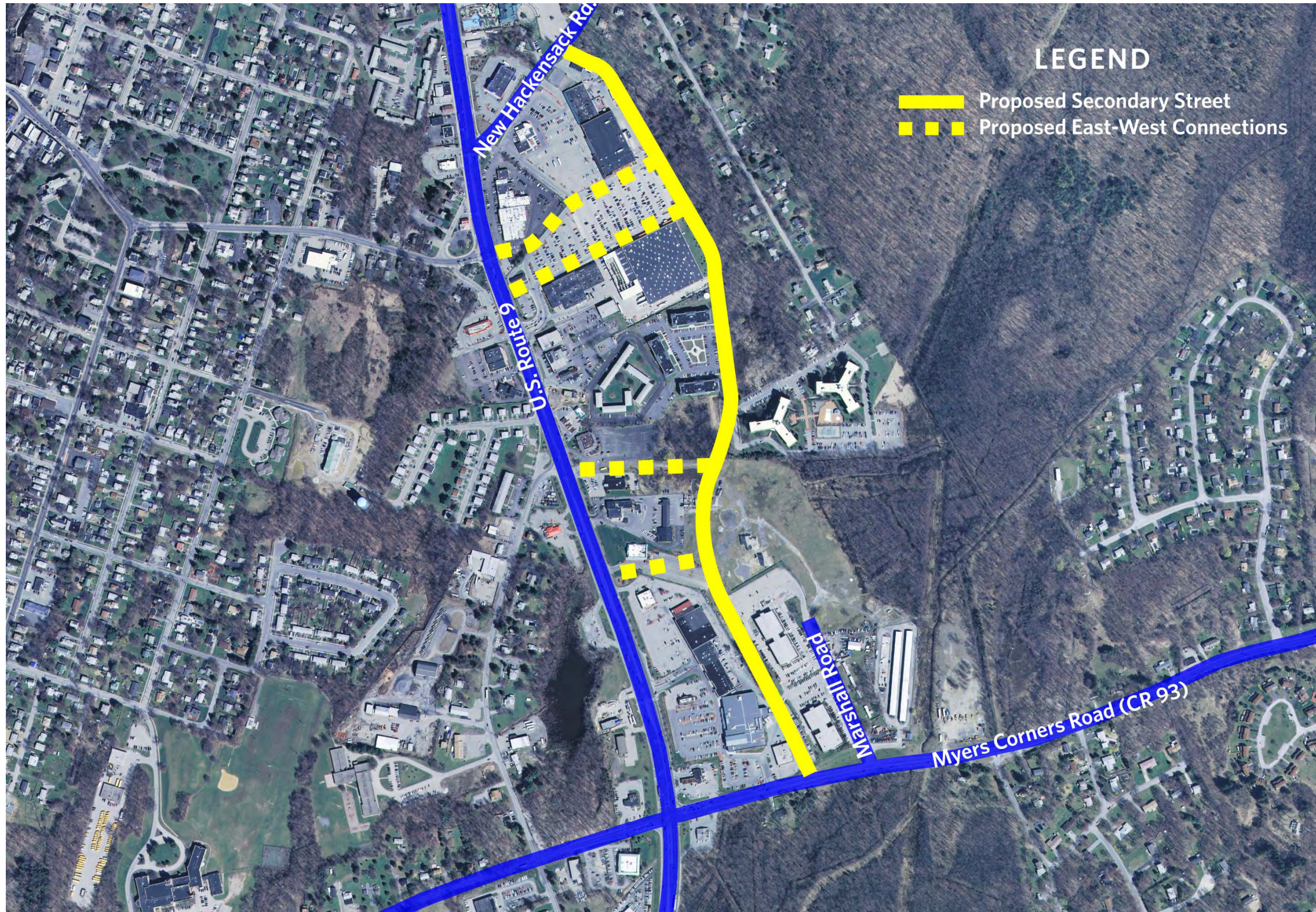


**LONG TERM IMPROVEMENT STRATEGY
CR 93 AND OLD ROUTE 9**



**SHORT TERM IMPROVEMENT STRATEGIES
 CR 93, US ROUTE 9 AND WAPPINGER PLAZA DRIVE**





Sources:

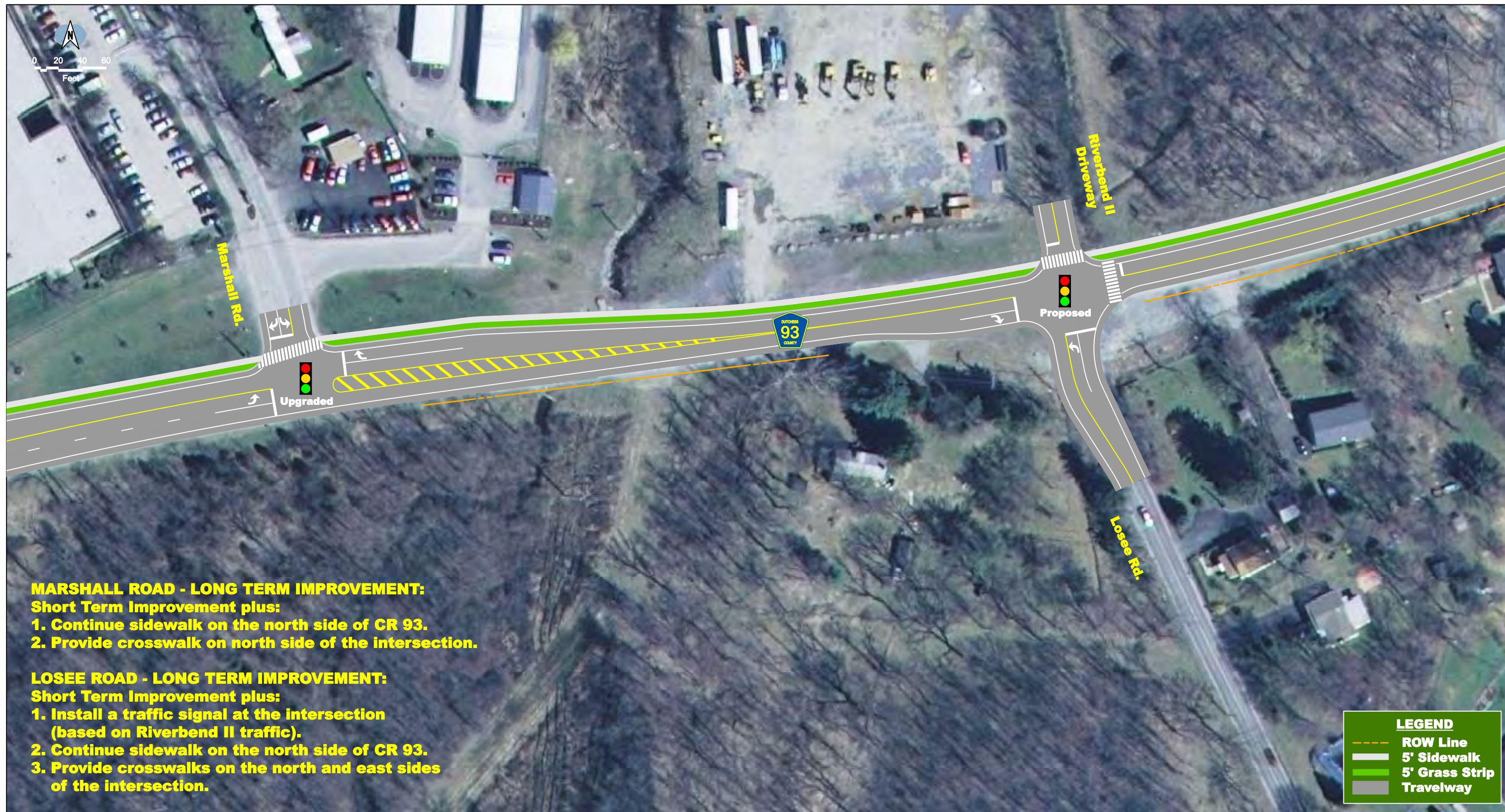
1. Town of Wappinger Comprehensive Plan, 2010, Figure VI-4, Frederick P. Clark Associates.
2. Dutchess County Planning Department.

Note:

This is a long term strategy, but analysis was outside the scope of the plan.



**SHORT TERM IMPROVEMENT STRATEGIES
CR 93, MARSHALL RD. AND LOSEE RD.**



**LONG TERM IMPROVEMENT STRATEGIES
CR 93, MARSHALL RD. AND LOSEE RD.**





**LONG TERM IMPROVEMENT STRATEGIES
 CR 93, ROBERT LA., SPOOK HILL RD. AND BLACKTHORN LOOP WEST**



**SHORT TERM IMPROVEMENT STRATEGIES
CR 93, BLACKTHORN LOOP EAST, ROY C. KETCHAM HIGH SCHOOL DRIVE AND ERVIN DR.**



**LONG TERM IMPROVEMENT STRATEGIES
CR 93, BLACKTHORN LOOP EAST, ROY C. KETCHAM HIGH SCHOOL DRIVE AND ERVIN DR.**