

**Attention Pinebrook Water Customers and Residents,**

The Dutchess County Water and Wastewater Authority (DCWWA) has completed the first phase a construction project to connect the Pinebrook Community with the Hyde Park Regional Water System. This new water source resolves long-standing water quality and quantity issues experienced by the community.

**Here is the most up-to-date information on the Project's progress:**

On Monday, December 20, 2021, the entire Pinebrook Community was successfully transitioned to the Hyde Park Water System via the first interconnection.

Water Main Construction: Water Main Construction to complete the second looped connection along Madison Avenue and Pinebrook Drive to Pinebrook community was paused due to the onset of winter weather.

Water Main Installation/Activation Team is tentatively scheduled to flush, disinfect and conduct activation testing of the line along Holt Road, Madison Avenue and Pinebrook Drive. See Map A.

**Holt Road / Madison Avenue Road Restoration Work tentatively scheduled Wednesday November 2, 2022 forward. Work will include surface preparation and then application of final pavement. Inclement weather may affect schedule. See Map B.**

Hydrant Replacement Along Pinebrook Drive and Newington: Be advised the DCWWA has scheduled replacement of nine faulty hydrants within the original Pinebrook water distribution system. To ensure worker safety the water main will need to be depressurized. All materials are on hand and every effort will be made to reduce impacts to the community. Work will occur in three phases that include pre-digging, hydrant replacement and clearing boil water notice. See Map C.

1. Pre-dig: Completed
2. Hydrant Replacement: Completed. No further planned water outages are anticipated for the Pinebrook Community.
3. Boil Water Notice: Following the last day of construction, it is likely that you will need to boil water for the next 3 to 5 days until required water sampling is completed and accepted by the Department of Health.

**The details of the Project are as follows:**

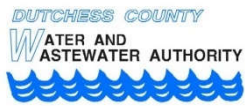
**Where** – The work will occur in specific areas:

- Approximately 5,000 Linear Feet of water main and appurtenances will be installed along portions of Holt Road W., Holt Road., Madison Avenue., Newington Drive., and Pinebrook Drive.
- Pinebrook Community's three potable water wells will be decommissioned.

**Contractors** - DCWWA has hired Thomas Gleason Inc. (Gleason) a general contractor to install the water main from the Hyde Park Regional Water System to the Pinebrook Water System in Hyde Park, NY. We have also hired MJ Engineering & Land Surveying, P.C. (MJ Engineering) to act as the DCWWA's field representative during the project.

The project includes the earliest interconnection possible while additional water main looping is completed to optimize water quality and fire protection to the Pinebrook community. Construction Progress Updates will be provided via the DCWWA's Alerts and Advisory Page via [www.DCWWA.org](http://www.DCWWA.org).

Unless there is an emergency or other unforeseen event, project work should typically occur from 7:00 am to 5:00 pm, Monday to Friday. During this time, travel along public and private roads serving your community may be impacted as the Contractor installs water main and hydrants along the project area. We apologize in advance for the inconvenience and have asked our contractor to minimize the impact of their activities on the Project area to the extent possible. We appreciate your patience as we work together to bring this important project to a successful conclusion.



**PINEBROOK WATER SYSTEM  
HYDE PARK REGIONAL WATER SYSTEM  
INTERCONNECTION**

**October 28, 2022**

**On-site Contacts** – During the Project, MJ Engineering will be the DCWWA’s field representative and will be coordinating the work with our Contractor in the project area. Should you have a question or concern, please contact in person the Gleason field crew supervisor or the MJ Engineering field representative. You may also contact the DCWWA.

Contractor – Thomas Gleason, Inc.

Thomas Gleason Construction Team – (845) 454-3730, (845) 453-2947 & (845) 453-3501

Field Representative – MJ Engineering & Land Surveying, P.C. (MJ Engineering)

Field Construction Administration Observer – Dan Giblin – (607) 743-3257

Construction Administration Consultant - Kurt Nichols – (518) 857-8270

System Operator

System Emergency: Mon-Sun., 845-926-8790 (Cody Nelson) or 845-706-7424 if you are unable to reach Cody Nelson

All System Emergencies after 4:00 pm and on Saturday and Sunday should be directed to Byrnes Answering Service at (845) 431-6677

DCWWA –

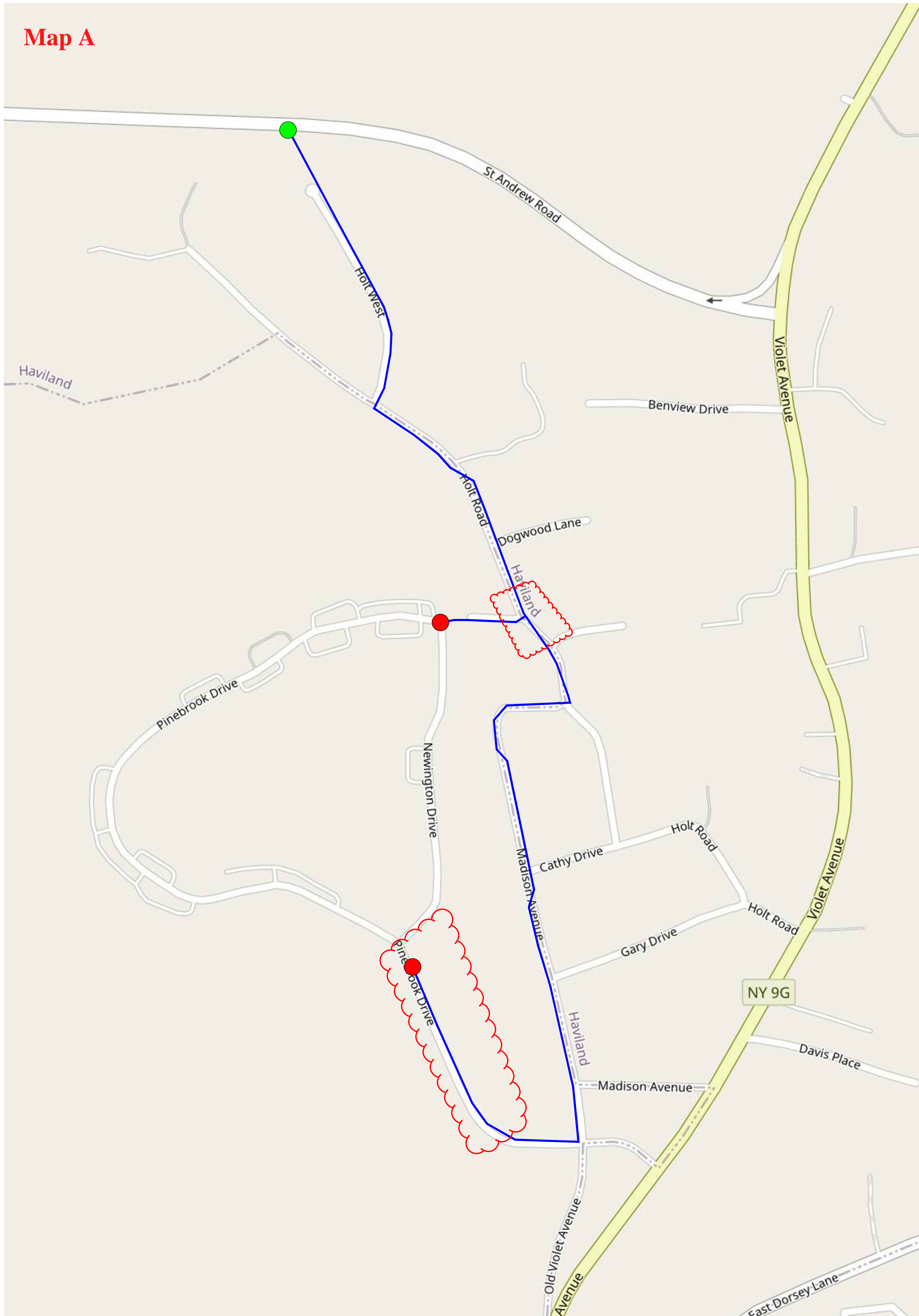
Project Manager – Jonathan Churins – (845) 486-3624

Main Office – (845) 486-3601

Thank you for your cooperation with this Project.

**\*\* Landlords – Please share this notice with your tenants. \*\***

# Map A



PINEBROOK WATER SYSTEM

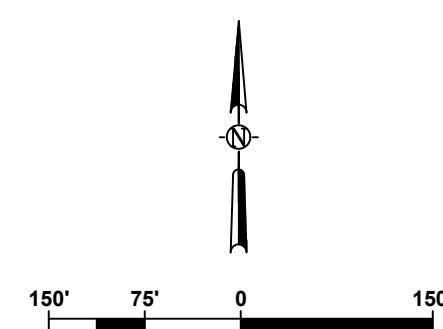
**WATER MAIN PLAN**

HYDE PARK REGIONAL  
 WATER SYSTEM INTERCONNECTION

HYDE PARK NEW YORK

**LEGEND**

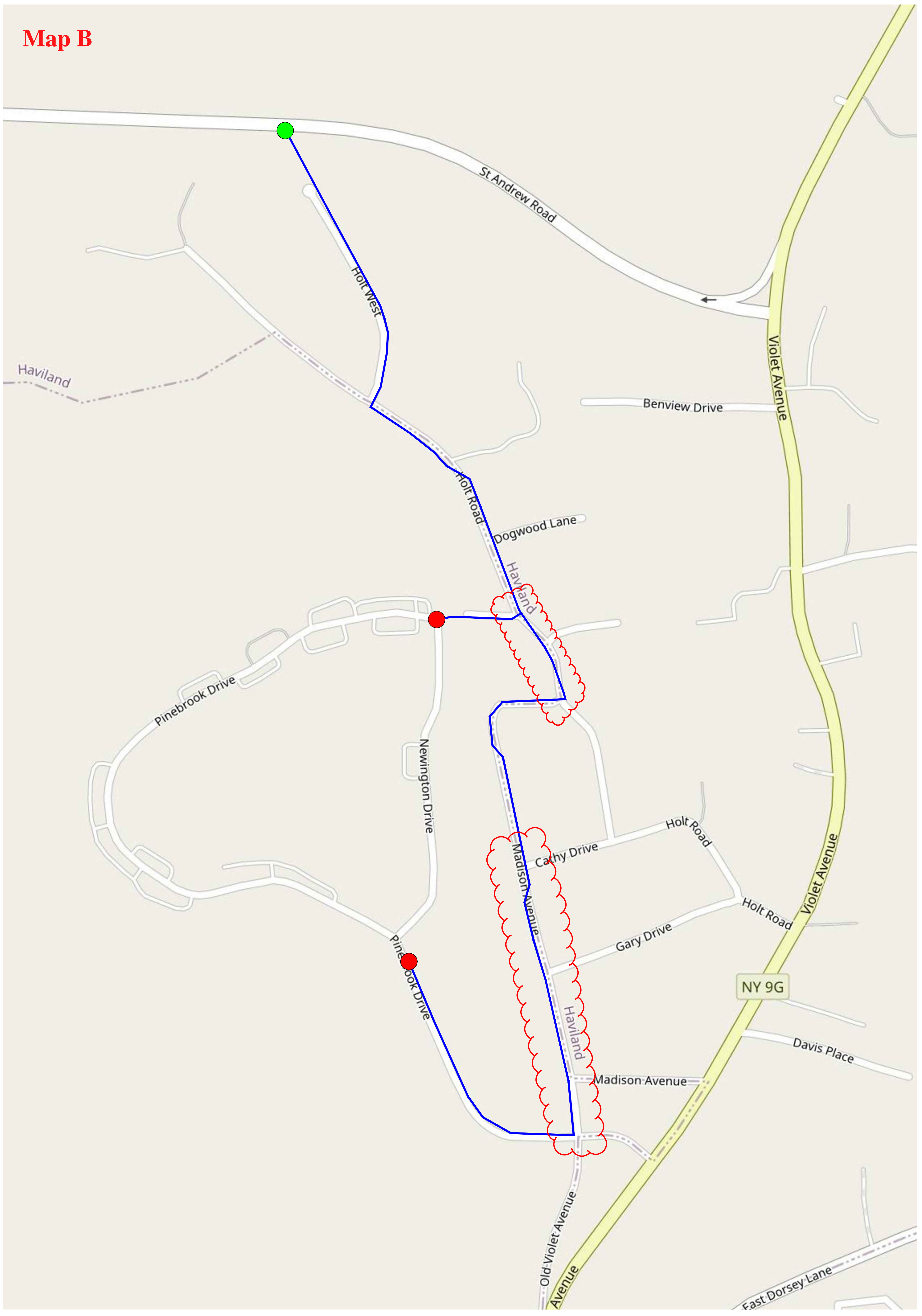
- 12" DUCTILE IRON WATER MAIN
- POINT OF CONNECTION TO HYDE PARK WATER SYSTEM
- POINT OF CONNECTION TO PINEBROOK WATER SYSTEM



Engineering and  
 Land Surveying, P.C.  
 1533 Crescent Road - Clifton Park, NY 12065

SCALE: AS SHOWN  
 CONTRACT No.:  
 MJ PROJ. No.:  
 DATE: JULY 2021

# Map B



PINEBROOK WATER SYSTEM

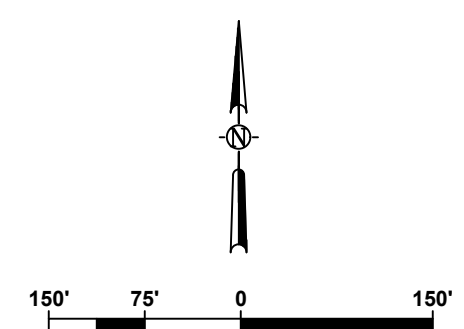
**WATER MAIN PLAN**

HYDE PARK REGIONAL  
 WATER SYSTEM INTERCONNECTION

HYDE PARK NEW YORK

**LEGEND**

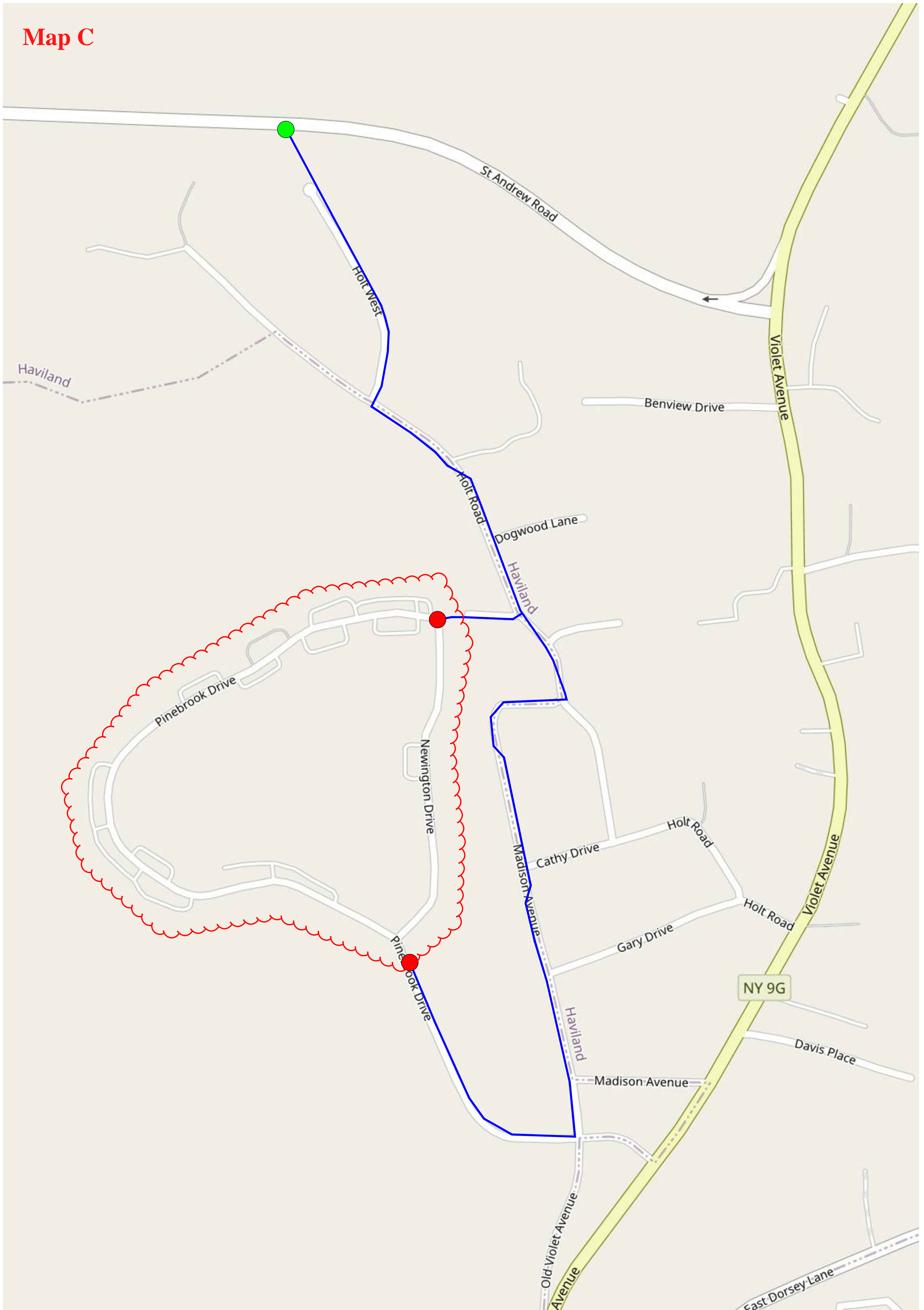
- 12" DUCTILE IRON WATER MAIN
- POINT OF CONNECTION TO HYDE PARK WATER SYSTEM
- POINT OF CONNECTION TO PINEBROOK WATER SYSTEM



Engineering and  
 Land Surveying, P.C.  
 1533 Crescent Road - Clifton Park, NY 12065

SCALE: AS SHOWN
CONTRACT No.:
MJ PROJ. No.:
DATE: JULY 2021

# Map C



**PINEBROOK WATER SYSTEM**

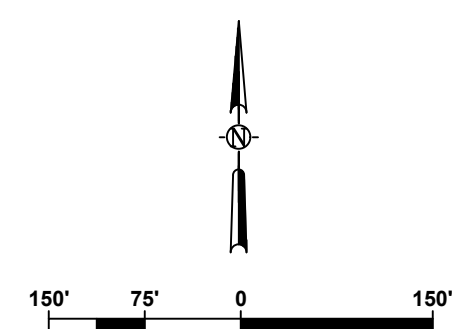
**WATER MAIN PLAN**

HYDE PARK REGIONAL  
 WATER SYSTEM INTERCONNECTION

HYDE PARK NEW YORK

**LEGEND**

- 12" DUCTILE IRON WATER MAIN
- POINT OF CONNECTION TO HYDE PARK WATER SYSTEM
- POINT OF CONNECTION TO PINEBROOK WATER SYSTEM



**Engineering and  
 Land Surveying, P.C.**  
 1533 Crescent Road - Clifton Park, NY 12065

SCALE: AS SHOWN  
 CONTRACT No.:  
 MJ PROJ. No.:  
 DATE: JULY 2021